



良品美器  
綠活工藝

TGC

Taiwan Green Craft  
2024 臺灣綠工藝



2024 臺灣綠工藝  
Taiwan Green Craft  
年度型錄



## 目錄 | Table of Contents

主任序 <i>Preface by the Director</i>	08	槿枝茶針匙 _ <i>SHISU Tea Pick</i>	66
評審委員 <i>Jury</i>	14	尤加利葉羊毛圍巾-生態移印染系列 _ <i>Eucalyptus Leaf Wool Scarf - Eco-Print Transfer Dye Series</i>	68
年度入選作品 <i>Selected Works</i>	16	花瓶鳥 _ <i>Bird Vase</i>	70
藍染刺繡側背郵差包 _ <i>Indigo Dyed Embroidered Messenger Bag</i>	18	雲山飾品架 _ <i>Mountain Jewelry Stand</i>	72
大地的禮物-永續筆 _ <i>Everlasting Pencil</i>	20	花語團扇 _ <i>Floral Hand Fan</i>	74
無我系列-綠檀鈕承煙側把茶器組 _ <i>Selfless Series - Green Sandalwood Teaware Set</i>	22	鑲花工藝托盤-金魚 _ <i>Marquetry Tea Tray - GoldFish</i>	76
曖曖內含光系列 _ <i>Eternal Sunshine of the Spotless Mind</i>	24	遊藝雅集~天染亞麻紳士帽 _ <i>Natural Dyed Linen Gentleman's Hat</i>	78
FLOW, 皮革花器 _ <i>FLOW, Leather Vase</i>	26	春花四喜杯墊 _ <i>Twined Flowers Coaster</i>	80
後揹摺紙包 _ <i>DIAMOND   Origami Leather Bag</i>	28	原織本色-構樹樹皮杯墊 _ <i>Paper Mulberry Bark Coaster</i>	82
可調節粗麻單肩圓筒包 _ <i>Adjustable Hemp Single-Strap Cylinder Bag</i>	30	露法椅 _ <i>Luffa Chair</i>	84
她們 _ <i>The Memories</i>	32	童言童語-鹿境茶匙 _ <i>Deer Realm Teaspoon</i>	86
鵝卵石置物盒 _ <i>Cobblestone Storage Box</i>	34	木職細刀 _ <i>Wooden Utility Knife</i>	88
吐司托盤 _ <i>Toast Shape Tray</i>	36	B&C多用休閒提包組 (Blue&Coffee) _ <i>B&amp;C Casual Totebag Set</i>	90
鳳凰記憶 _ <i>Flame Tree Memory</i>	38	戀戀單椅 _ <i>FACET</i>	92
O O 竹耳環 _ <i>O O Bamboo Earrings</i>	40	原木-黃銅鞋拔禮盒組 _ <i>Brass Shoe Horn</i>	94
雙層橢圓角盤 _ <i>Oval Wooden Plate</i>	42	燦若星辰系列~小酒杯 _ <i>Stars Series - Lacquered Small Wine Glass</i>	96
荷瓣茶匙 _ <i>Tea Spoon</i>	44	青瓷鏤空刻花水方組 _ <i>Celadon hollowed-out Engraving Water Vessel</i>	98
蚪蚪茶漏&小茶則 _ <i>Tea Spoon &amp; Tea Leak</i>	46	Old Pal系列鋼筆-台灣龍柏 _ <i>Old Pal Series - Fountain Pen</i>	100
鞘盒子(長) _ <i>Sheath Box</i>	48	花青台灣 _ <i>Indigo Flower</i>	102
海棠花 茶針置&筷架 _ <i>Begonia Tea Pick &amp; Chopstick Holder</i>	50	臺灣檜木花 精油擴香禮盒組 _ <i>Taiwan Cypress Flower - Essential Oil Diffuser Gift Set</i>	104
緋寒 _ <i>Fēi Hán</i>	52	窗花馬克杯墊-竹編文創商品 _ <i>Bamboo Woven Coaster</i>	106
重塑水泥吊燈 _ <i>Concrete Pendant Light</i>	54	祖傳珍寶 _ <i>Inherited Treasure Bracelet</i>	108
人字紋竹製文具盒 _ <i>Herringbone Pattern Bamboo Stationery Case</i>	56	凰帽 _ <i>Bucket Hat with Strap</i>	110
POTTERY計畫 _ <i>Pottery Plan</i>	58	宇宙狂想-茶荷 _ <i>Rhapsody in One</i>	112
星海之環 _ <i>Starry Sea Glass Vase</i>	60	台灣老玻璃復古玻璃杯墊組 _ <i>Taiwanese Vintage Glass Coaster</i>	114
蘭編提籃 _ <i>Rush Grass Basket</i>	62	奇異鳥花瓶 _ <i>Kiwi Bird Vase</i>	116
百岳清酒杯 _ <i>Baiyue Sake Cup</i>	64		
		年度入選品牌索引 <i>Index</i>	120

## 主任序

*Preface by the Director*

**TGC**  
Taiwan Green Craft

## 主任序

從1954年南投縣工藝研究班出發，國立臺灣工藝研究發展中心設立迄今已屆七十年，持續於人才培育、文化推廣與產業扶植等面向戮力發展，陪伴臺灣工藝一路前行。為了讓大眾更深入地理解臺灣當代工藝文化蘊含的創意設計、技術能量及永續精神，工藝中心推動臺灣工藝認證及推廣計畫，公開徵選發掘臺灣在地原創工藝，喚醒人們在生活中體會工藝存在，探 uses 物哲思，從而發現器用之美。

2024年，工藝中心迎來七十周年的里程碑，這段歷程承載了臺灣工藝深厚的能量。秉持著工藝精神，我們將持續回應時代的變化與需求，邁向下一個七十年。在今年度「活工藝·工藝活」的倡議下，本屆臺灣綠工藝認證以品牌永續經營為目標，首先明確「定向」，以「綠活工藝·良品美器」作為品牌主軸，核心概念為「源自臺灣，起始於生活，於生活實踐，無限可能的綠活工藝」，強調工藝本質與生活密切關聯，應貼近生活所需、提升生活品質，並引導大眾將工藝深入日常實踐；其次精準「定性」，在工藝光譜的梳理下，將臺灣綠工藝認證作品定為投入產業市場的產品化工藝品；最後落實「定位」，將清晰的定向實踐於評選程序、評審團隊組成、評選原則以及後續行銷推廣措施中，完備臺灣綠工藝的對外形象定義。

今年度臺灣綠工藝認證最終共50組作品獲選，由多位具有市場敏銳度及設計美感的專家擔任評審，從實體店行銷、跨國電商通路和工藝技術等不同視野，結合消費定價與潮流喜好等行銷經營策略為審查原則，層層篩選出更貼近顧客需求的市場潛力商品。評選結果期望傳遞出的重要訊息：「工藝兼具『設計』與『美術』面向，而我們所定義的綠工藝，希望能真正運用於生活層面，被大眾所接受與購買。」從家居家飾、餐食品、個人穿搭到質感文具等，工藝類型多元、生活應用面向廣泛，「讓工藝成為日常中最講究的細節」實際展現於入選作品中。

認證入選後的行銷推廣是深入市場的重要任務，入選作品經內容形塑轉譯後收錄於年度型錄中，並在公開頒獎典禮上授予榮耀等，創造品牌形象的價值提升。此外，我們透過社群媒體、實體推廣活動與市場通路引介等多元行銷資源，向大眾傳遞工藝的美好。同時，我們也期望表達工藝中心作為工藝產業的後盾，將持續攜手工藝品牌深入市場，增進產業動力，促進持續發展。

藉由保留傳統技藝並融合當代設計，臺灣工藝不只是展現純粹的美感，更思考使用者、空間與自然之間的關聯，以作品訴說人文與生活態度。隨著臺灣綠工藝的推廣，我們期待將臺灣工藝文化帶入生活視野，演繹出當代工藝與日常相互襯托的新風貌，同時傳達工藝漫活新觀點，將Made in Taiwan的工藝好物推介紹給大眾，讓更多人在工藝的陪伴下，享受心靈的慢活之道。

國立臺灣工藝研究發展中心 主任

陳致禮



## Preface by the Director

Since the establishment of the Nantou County Craft Research Training Program in 1954, the National Taiwan Craft Research and Development Institute(NTCRI) has traversed a journey spanning seventy years. The institute remains dedicated to talent cultivation, cultural promotion, and industry support, advancing alongside the evolution of Taiwanese craftsmanship. To deepen public understanding of the creative design, technical expertise, and sustainable spirit embedded in contemporary Taiwanese craft culture, the institute has launched a certification and advocacy program for Taiwanese crafts. This initiative seeks to identify and highlight original local crafts, fostering greater awareness of craftsmanship in daily life and inspiring exploration into the philosophies behind crafted objects, ultimately revealing their inherent beauty.

In 2024, NTCRI proudly celebrates its seventieth anniversary, a milestone symbolizing the rich spirit of Taiwanese craftsmanship. Upholding this enduring legacy, we reaffirm our commitment to addressing the evolving changes and needs of the times as we progress toward the next seventy years. This year, under the theme "Living crafts and crafts living," the Taiwan Green Craft Certification program has established sustainable brand management as its central goal.

First, we have refined our "direction," positioning "Green Craft•Quality Artifacts" as the brand's primary focus. The core concept, "Rooted in Taiwan, beginning in life, practiced in life – green craft with infinite possibilities," underscores the profound connection between craftsmanship and everyday life. It emphasizes that craftsmanship should not only meet daily needs but also elevate quality and inspire people to incorporate craft into their daily routines.

Second, we precisely "define" certified works within the craft spectrum as commercialized, productized crafts designed for the industry. Finally, we implement "positioning" by incorporating this defined direction into the selection process, jury composition, evaluation criteria, and subsequent marketing and promotional strategies, establishing a cohesive and compelling image for Taiwan Green Craft.

This year, 50 pieces have been selected for the Taiwan Green Craft Certification, assessed by a panel of experts with strong market insight and refined aesthetic judgment. The selection process considered multiple aspects, including store marketing, international e-commerce channels, and craft techniques, as well as factors like consumer pricing and trend preferences. These criteria helped identify products with high market potential that resonate with customer needs. Our core message through these selections is that "craftsmanship embodies both 'design' and 'art,' and our vision of green craftsmanship is for it to be integrated into everyday life, broadly appreciated, and accessible to all."

The selected works cover a range of categories, including home decor, tableware, personal accessories, and quality stationery, demonstrating the broad lifestyle appeal of craftsmanship and affirming that "craftsmanship brings refinement to the smallest details of daily life."

Marketing and promotion following certification is a crucial step toward penetrating the market. After being shaped and curated, selected works are featured in an annual catalog and celebrated in an award ceremony, enhancing brand value and recognition. Furthermore, we leverage various marketing resources, including social media, promotional events, and market introductions, to share the beauty of craft with the public. At the same time, we strive to convey that NTCRI serves as a strong support for the craft industry, continuously collaborating with craft brands to deepen market engagement, invigorate the industry, and promote sustainable growth.

By preserving traditional skills while integrating contemporary design, Taiwanese craftsmanship expresses not only pure beauty but also thoughtfully considers the connection between users, spaces, and nature, with each piece reflecting cultural values and a unique way of life. Through Taiwan Green Craft, we aim to bring Taiwanese craft culture into everyday life, achieving a harmonious blend of contemporary craftsmanship with daily living. This initiative offers a fresh perspective on mindful living through craft and introduces Taiwan-made craft goods to a broader audience, inviting more people to embrace a slower, more intentional lifestyle infused with the beauty of craftsmanship.

Director of National Taiwan Craft  
Research and Development Institute



# 評審委員

*Jury*

**TGC**  
Taiwan Green Craft

評審委員 | Jury



**林國隆 Lin, Guo-Long**

財團法人水里蛇窯文化基金會 董事長

用工藝優化心靈養分，用工藝充實生活美感。



**陳添順 Chen, Tein-Shun**

鴻梅文創志業股份有限公司 (或者OR) 執行長

工藝不僅強調物件的實用性，更追求美學與手感，讓生活空間充滿溫度與獨特性，營造出細膩而優雅的生活氛圍。



**吳宜叡 Yira Wu**

半山夢工廠 創辦人  
樹德企業股份有限公司 董事長

美感是工藝的養分，滋養每一個獨一無二的作品。



**駱毓芬 Lo, Yu-Fen**

品研生活美學有限公司 創意總監

工藝品對我而言，他就像是生活中的靈魂伴侶。感受到作品背後工藝家一甲子的功力以及對手工的執著。工藝品成為人們一個生活道具，是經典般的存在。



**汪麗琴 Wang, Li-Chin**

未來式有限公司(未來市The Gala Asia) 主席

工藝之於生活宛若生命中的活水，讓情趣、品味、美學，自然而然的無處不在，善用工藝之美於生活中，最能成就優雅文人雅士及生命風範。



**何芸徵 He, Yun-Zheng**

Pinkoi 全球策略部 資深策略經理

工藝是生活最美的註腳；每件作品是職人對生活的獨特詮釋。Pinkoi 相信，工藝不僅是物件，更是實現美好生活想像的載體。



# 年度入選作品

*Selected Works*

**TGC**  
Taiwan Green Craft



太平藍\_藍染刺繡側背郵差包 Taiping Blue\_Indigo Dyed Embroidered Messenger Bag

## 用視覺和觸感編織藍染之美 喚醒感知的覺察

「藍染刺繡側背郵差包」以藍染和龍眼鐵染色的棉麻混紡作為主要布料，繁複的染色工序讓包袋呈現出色澤交織的層次感，融合著藍染工藝及頭汴坑的在地色彩，展現植物染獨有的視覺印象，充足容量與簡約風格的設計，是日常通勤良伴。

The *Indigo Dyed Embroidered Messenger Bag* is made primarily from a cotton-linen blend dyed with indigo and longan-iron pigments. The intricate dyeing process gives the bag a rich, layered interplay of colors. This bag combines the art of indigo dyeing with the local colors of Toubiankeng, showcasing the unique visual appeal of plant-based dyeing. With ample storage capacity and a simple, elegant design, it is both practical and stylish, making it an ideal choice for everyday commuting.

### 太平藍 Taiping Blue

電話 / 04-22277826

Email / watersource@mail2000.com.tw

地址 / 臺中市太平區長龍路四段 20 號

No. 20, Sec. 4, Changlong Rd., Taiping Dist., Taichung City, Taiwan (R.O.C.)



藍染，是一種傳統的染色技藝，於夏季時分摘取藍草植物，提煉顏色後反覆對布料進行染色，隨著不同的藍染技法，呈現各異其趣的花紋與色彩。在臺中太平頭汴坑創立的「太平藍」，透過藍染纖維文化，將顏色的形狀載入想像的空間，追求傳統工藝的創新，也延續著在地文化的使命，創造傳統與現代共融的工藝設計。

帶著簡約風格的「藍染刺繡側背郵差包」，使用藍染、龍眼葉搭配鐵媒染劑等天然染料為棉麻混紡布料添上不同色彩，以冷染及熱染技法進行繁複的染色工序，藉由棉線與麻線對染料不同吸附程度的特點，呈現出色澤交織的層次感；藍色和灰色兩色拼接，融合著藍染工藝及頭汴坑的在地色彩，也展現植物染的獨有的視覺印象。

Indigo dyeing is a traditional dyeing technique that typically involves harvesting indigo plants during the summer. After extracting the dye, the fabric is repeatedly dyed to create a simple yet elegant style. With various indigo dyeing techniques, different kinds and unique patterns and colors are presented. *Taiping Blue* established in Toubiankeng, Taiping, Taichung, brings the shape of colors into the realm of imagination through the culture of indigo-dyed fibers. It pursues innovation in traditional craftsmanship while continuing the mission of local culture, creating a blend of traditional and modern craft design.

The *Indigo Dyed Embroidered Messenger Bag* is a perfect representation of this craftsmanship. The bag utilizes the indigo dyeing technique, combined with natural dyes like longan leaves and iron mordant, to infuse the cotton-linen blended fabric with various colors. The design features a combination of blue and gray, blending the art of indigo dyeing with the local colors of Toubiankeng, beautifully showcasing the unique visual effect of plant-based dyeing.

### 商品規格

材質 / 棉麻混紡布料(藍染、龍眼鐵染色)  
Indigo-dyed fabric, longan iron-dyed fabric

尺寸 / 30 X 10 X 18 cm

參考售價 / NTD 3,500 / 件







「老木創生木制所」以臺語的諧音「老母」，象徵著創造無限生命力，也承載著對大地之母的深切敬意。以「樹木的原型美學是最好的設計」的概念，將木製工藝轉化為具有藝術感和生活溫度的產品，並結合永續發展目標 (SDGs) 的理念，從校樹、行道樹到農具家具的舊木、漂流木等，可再生的木料都成為「老木創生木制所」的創作素材。

「大地的禮物-永續筆」以校樹像是龍柏、行道樹如樺木、黃連木修剪下的木料，或老屋拆除材如紅檜製作而成，筆身依據木頭自身的形態與特性，結合工藝師手工技藝，製作出獨特質感的永續筆。筆頭採用可以重複使用的合金金屬，透過刮擦紙面產生痕跡，氧化後留下如石墨般的線條，不需要削筆、也不需要更換筆芯，展現了創意思考，也融入永續精神。

除此之外，永續筆的另一側具備抒壓棒的功能性，成為日常穴道紓壓的好幫手，使用時也能聞到天然的木頭香。「老木創生木制所」將可再生利用的資源轉化為生活中的文具和物品，優雅地詮釋了自然與設計的和諧，也將木製工藝推向創意思維的領域，讓生活當中的每一個細節都充滿了意義。



老木創生木制所\_大地的禮物-永續筆 LAO MU\_ Everlasting Pencil

## 永續循環木工藝 不需要墨水和筆芯的永續筆

「大地的禮物-永續筆」以校樹和行道樹修剪下的木料製作而成，筆頭採用可以重複使用的合金金屬，透過刮擦紙面產生痕跡，氧化後留下如石墨般的線條，不需要削筆、也不需要更換筆芯，兼具再生及永續概念。

The *Everlasting Pencil* is made from wood sourced from pruned trees on school campuses and along streets. The pen tip is crafted from reusable alloy metal, which leaves graphite-like marks by gently scraping against the paper. This unique pen requires no sharpening and no refill replacements, embodying the concepts of regeneration and sustainability perfectly.

老木創生木制所 LAO MU

電話 / 0989-766318、0978-016337

Email / owoodhouse1126@gmail.com

地址 / 臺南市南區西門路一段 689 巷 31 號

No. 31, Ln. 689, Sec. 1, Ximen Rd., South Dist., Tainan City, Taiwan (R.O.C.)



### 商品規格

材質 / 龍柏、黃連木、樺木、紅檜、黃檜等木料

Cypress, pistacia chinensis, beech, red cypress, yellow cypress and other woods

尺寸 / 15 X 2 cm (尺寸因木料差異，會有微差)

參考售價 / 臺灣樺木 (Taiwan beech) NTD 820/件

黃連木 (Pistacia chinensis) NTD 920/件

臺灣龍柏 (Taiwan dragon Chinese juniper) NTD 888/件



Lao Mu, inspired by the Taiwanese homophone "lao mu," meaning "mother," symbolizes boundless creativity and honors Mother Earth. With a belief that the natural beauty of trees is the best design, the workshop transforms woodcraft into products that blend artistic expression with the warmth of daily life. Aligned with the Sustainable Development Goals (SDGs), the workshop uses renewable wood materials, including trees from schools, roadside trees, reclaimed wood from farm tools and furniture, and driftwood, as resources for creative expression.

The Everlasting Pencil is crafted from wood sourced from pruned trees on campuses and streets, or from reclaimed materials from old buildings. The design of the pen body follows the natural shape and characteristics of the wood, combined with the artisan's craftsmanship to create a pen with a unique texture. Additionally, one end of the pen functions as a stress-relief massage tool, making it a helpful companion for acupoint massage in daily life, while the natural fragrance of the wood adds to the sensory experience during use.





上作美器\_無我系列-綠檀鈕承煙側把茶器組 SZMQ STUDIO\_ Selfless Series - Green Sandalwood Teaware Set

## 富含東方禪意 千年陶瓷工藝詮釋茶道之美

「無我系列」茶器採用1250度的高溫燒製，壺身以原礦黑泥和定白釉作為搭配，凸顯了粗獷的窯燒肌理；純粹的黑白色調，象徵東方美學簡約的意境之美；品茶過程中產生的白煙飄渺視覺感受，讓使用者體會到心境的柔順與暢快。

The *Selfless Series - Green Sandalwood Teaware Set* is fired at a high temperature of 1,250 degrees Celsius, with the teapot body crafted from raw black clay paired with Ding white glaze, highlighting a rugged, natural kiln-fired texture. The pure black-and-white color scheme symbolizes the beauty of simplicity found in Eastern aesthetics. During the tea-drinking experience, the drifting white smoke enhances a gentle and refreshing state of mind for the user.

上作美器 SZMQ STUDIO

電話 / 0963-461659、02-26200006

Email / doreen@szmq.tw



品茶之道，記載著來自千年的文化底蘊，「上作美器」以陶瓷工藝為基礎，融合臺灣在地美學，詮釋道地的東方茶文化；以佛學禪意為設計靈感的「無我系列」茶器，強調器物與工藝家心血交融，匠人靈魂注入於器物的框架和形體，任由空間和時間的推移下，賦予器物形成獨一無二的樣貌。

作品「無我系列」茶器採用1,250度的高溫燒製，純粹的黑白色調，象徵東方美學簡約的意境之美；壺身採用原礦黑泥搭配定白釉，凸顯了粗獷的自然窯燒肌理，也在觸感上帶來驚喜，讓使用者在品茶之餘，也能夠感受器物的質樸與細膩。在品茶過程中，以濕泡讓水氣接觸壺身，水氣會附著在佈滿毛細孔的表面肌理；當再次以熱水沖於壺內，熱水的溫度便會蒸發壺面水分，產生白煙飄渺的視覺感受。

在茶席的氛圍中，感受藉由水氣形成的白煙繚繞，體會心境的柔順與暢快，茶與器物的關係，之於人與萬物的微妙牽連，也進而達到心靈的平靜與自我反思的境界。

The art of tea embodies a rich cultural heritage spanning thousands of years. The *SZMQ STUDIO* series, rooted in ceramic craftsmanship, integrates local aesthetics from Taiwan to interpret authentic Eastern tea culture. The *Selfless Series - Green Sandalwood Teaware Set*, inspired by Buddhist Zen philosophy, emphasizes the fusion of the artisan's dedication with the objects they create. Each piece reflects the craftsman's soul, which is infused into its form and structure, allowing the passage of time and space to bestow a unique character upon the wares.

The *Selfless Series - Green Sandalwood Teaware Set*, teapot is made from raw black clay, paired with Ding white glaze, showcasing a rugged, natural kiln-fired texture that offers a surprising tactile experience. This tea set allows users not only to savor the richness of the tea but also to appreciate the contrast between the simplicity and the refinement of the vessel's design.

### 商品規格

材質 / 原礦黑泥、綠檀鈕、原木手柄

Raw black clay, green sandalwood buttons, wood handles

尺寸 / 壺：16 x 8 x H9 cm，容量 180ml

茶海：8 x 7 x H8.5 cm，容量 300ml

茶杯：口徑 6 x H3 cm，容量 30ml

茶盤：直徑 25 cm

參考售價 / NTD 26,800 / 組







米口·陶\_ 曖曖內含光 系列 Mico Pottery\_ *Eternal Sunshine of the Spotless Mind*

## 生活的痕跡 手作陶瓷的溫度與故事

「曖曖內含光」系列作品以低調而內斂的三種釉色：夜灰、霧綠和海藍作為主色，釉面上豐富的結晶變化與層次堆疊，彷彿在訴說著每一個使用者的故事，並且盤面都搭配著不同的手繪臺灣花卉，發展出的全新樣貌與色澤。

*The Eternal Sunshine of the Spotless Mind* series features three understated and introspective glaze colors—night gray, mist green, and sea blue. The rich crystalline variations and layered textures on the glaze seem to tell the story of each user. Additionally, each plate is adorned with different hand-painted Taiwanese flowers, showcasing a fresh array of shapes and hues.

米口·陶 Mico Pottery

Email / mmcc0417@gmail.com

地址 / 苗栗縣造橋鄉乳姑山17號

No. 17, Rugushan, Zaoqiao Township, Miaoli County 361, Taiwan (R.O.C.)



手作陶瓷的魅力，在於器皿被使用的過程中，逐漸累積了生活的痕跡，讓每件作品都充滿了故事與情感，這是「米口·陶」兩位職人對於手工製陶的詮釋。工作室位在能看見山、遇見海的地方，創作時感受到大自然源源不絕的能量，也因此期盼使用作品的人，能夠在快節奏的生活中，慢下腳步，靜聽內心的聲音。

在繁忙的生活當中，常常會迷失自我，卻又渴望在日常中找到那份平靜與美好，「曖曖內含光」系列作品，正是為了這樣的日子裡，讓大家感受到生活的溫度與光。以低調而內斂的三種釉色：夜灰、霧綠和海藍作為主色，平光的釉面，一眼便能感受到沈靜的氣質；而釉面上豐富的結晶變化與層次堆疊，彷彿在訴說著每一個使用者的故事。

「曖曖內含光」系列作品每款盤面上都搭配了不同的手繪花卉，工藝師透過觀察臺灣自然花卉後，發展出的全新樣貌與色澤，讓使用者在視覺上感受到溫暖的手感；每一件作品展現了溫柔且踏實的美，提醒著我們，重複且樸實的日常小事，才是最幸福的所在。

### 商品規格

材質 / 陶瓷

Ceramics

尺寸與參考售價 /

八角方盤 (Octagonal square plate)

15 x 14 x H2.5 cm 參考售價：NTD1,400 / 件

八角長方盤 (Octagonal rectangular plate)

22.5 x 18.5 x H2 cm 參考售價：NTD1,750 / 件



The charm of handcrafted ceramics lies in the way each piece gradually gathers traces of life through use, becoming imbued with stories and emotions. This is how the two artisans at *Mico Pottery* interpret the art of handmade ceramics. Located where mountains meet the sea, their studio is constantly inspired by the boundless energy of nature. They hope that those who use their creations will be able to slow down amidst the fast pace of life and listen to the voice within.

In the midst of a busy life, people often lose themselves while longing to find peace and beauty in their daily routines. The *Eternal Sunshine of the Spotless Mind* series is created for such days, allowing everyone to experience the warmth and brightness of life. The artisan has developed new forms and colors by observing Taiwan's natural flowers, enabling users to visually appreciate a warm tactile experience.





WÈI CRAFT\_FLOW, 皮革花器 WÈI CRAFT\_FLOW, Leather Vase

## 用花器紀錄日月 革工藝重拾生活的美好

「FLOW, 皮革花器」一針一線由手工縫製，縫線由寬底環繞180°至對角頂端的窄口，展現手縫工藝的精巧；花器足部運用濕塑技法增加堅固度，內部更隱藏著能定位玻璃管位置的小細節，讓玻璃管能夠安穩擺正。

The *FLOW, Leather Vase* is a beautifully handcrafted piece. Each stitch showcases the exquisite craftsmanship of hand sewing, with the thread extending from a wide base around 180° to the narrow opening at the diagonal, creating a unique design. The bottom of the vase employs a wet molding technique, enhancing its sturdiness. Additionally, a clever small detail is hidden inside to position the glass tube, ensuring that it is placed stably and correctly.

### WÈI CRAFT

電話 / 0922-004669、0989-706013

Email / theweicraft@gmail.com

地址 / 臺中市西區公正路 156 巷 7 弄 7 號 2 樓

2F., No. 7, Aly. 7, Ln. 156, Gongzheng Rd., West Dist., Taichung City, Taiwan (R.O.C.)



「WÈI CRAFT」創辦人魏大鈞，以誠懇而自然的「革工藝」，築起生活之美，將植鞣革視為能承載時間、儲存日常的載體，希望透過植鞣革的璞真與手工藝獨有的氣息，展開時間的形狀，並體現生活感知與工藝品綿延的交織。

外型吸睛的「FLOW, 皮革花器」，一針一線手工縫製，縫線由寬底環繞180°至對角頂端的窄口，展現手縫工藝的精巧；花器足部運用濕塑技法增加堅固度，內部更隱藏著能定位玻璃管位置的小細節，讓可注入清水滋養新鮮花草的玻璃管能夠安穩擺正。每一絲縫線，都有著職人對自然之美的賞識，花器內的玻璃管就像一道無形的畫框，將鮮花的生命定格在時光的畫卷中。

皮革花器簡約俐落的外型，帶著柔和的線段，融合著植鞣革與手縫線的溫潤質感，適合做為各種空間氛圍的生活擺件。品牌「WÈI CRAFT」以最寧靜自然的方式，記錄下生活的日日月月，透過瓶器蔓延生命與藝術的交匯，重拾起對生活的美好。

*WÈI CRAFT* founder Dai-Chun Wei envisions beauty in everyday life through authentic and natural leather craftsmanship. He regards vegetable-tanned leather as a vessel that captures the essence of time and daily moments. By embracing the raw authenticity of this leather and the unique touch of handcrafting, he aims to reveal the passage of time, creating a lasting blend of life perspective and artistry.

The eye-catching *FLOW, Leather Vase* is meticulously hand-stitched, with the thread wrapping 180° from its wide base to its narrow top, showcasing the precision of leatherwork. The vase's base is reinforced through wet-forming techniques for stability, and a subtle detail inside secures a glass tube, allowing it to stand upright and hold water for fresh flowers. Each stitch reflects the artisan's admiration for nature's beauty, while the glass tube within serves as an invisible frame, preserving the life and vibrancy of flowers over time.

The *FLOW, Leather Vase* showcases every stitch as a testament to the artisan's profound appreciation for the beauty of nature. Its minimalist and sleek design, combined with gentle lines, merges the warmth of vegetable-tanned leather and hand-stitched details, making it an ideal decorative piece for various spatial atmospheres. The brand *WÈI CRAFT* presents this vase as a convergence of life and art, allowing people to rediscover the beauty of everyday life.



### 商品規格

材質 / 植鞣牛革、棉蠟線、玻璃  
Vegetable tanned cowhide, waxed thread and glass

尺寸 / 7 X 7 X 16 cm

顏色 / 原色、茶色、黑色

參考售價 / 單線版 (Single line version) NTD 2,800 / 件  
八線版 (Eight-line version) NTD 4,500 / 件





AURA 稜光\_DIAMOND | 後揹摺紙包 AURA\_DIAMOND | Origami Leather Bag

## 精湛摺紙工藝 展現都會新時尚

「DIAMOND後揹摺紙包」採用源自臺灣且環境友善的純素皮革縫製而成，空包重量僅950g的輕量化設定，肩帶使用臺灣製造質地堅韌、耐水的尼龍編繩，三點式肩帶可以讓雙肩揹負時維持穩定不晃動，亦可隨時轉換成單肩側揹使用。

The DIAMOND | Origami Leather Bag is made from eco-friendly vegan leather sourced from Taiwan, weighing just 950 grams, making it lightweight and portable design. The shoulder straps are crafted from durable, water-resistant nylon rope, also made in Taiwan, ensuring excellent durability. The three-point strap system provides stability when worn on both shoulders, preventing wobbling, and can be easily converted for single-shoulder carrying.

AURA 稜光

Email / services@aura-craft.com



「AURA 稜光」作品以摺紙的原理製作皮件，使用獨特的「複合壓摺」設計，讓單一的平面皮料變化成各種不同的幾何量體，讓每個立體稜角與幾何邊緣，唯美地刻劃出光影之間的界線。

而「DIAMOND後揹摺紙包」採用源自臺灣且環境友善的純素皮革縫製而成，在臺灣潮濕的環境中不會有容易發霉的問題；空包重量僅950g的輕量化設定，除去背包的沉重感，外型吸睛時尚且質輕堅固的特質，特別適合都會女性的日常穿搭；肩帶使用臺灣製造質地堅韌、耐水的尼龍編繩，三點式肩帶可以讓雙肩揹負時維持穩定不晃動，亦可隨時轉換成單肩側揹使用。

只要輕鬆將榉木抽繩塊拉開就能取用包內物品，內容量大小適中可以裝進日常的隨身物品；揹在身上如同一個微型的時尚雕塑品，不論是日常上班或是假日休閒，「DIAMOND後揹摺紙包」都能與各種穿搭風格融合，當代前衛的外型更能展現不盲從的時尚品味。

### 商品規格

材質 / 純素皮革、塑料、尼龍、黃銅、榉木  
Vegan leather, plastic, nylon, brass, beech  
尺寸 / 25 X 25 X 33 cm  
顏色 / 曜石黑、苔蘚綠、泥灰藍  
參考售價 / NTD 14,700 /件



The AURA series draws inspiration from origami craftsmanship. Using a unique "composite pleating" design, the single flat leather material transforms into various geometric forms. Each three-dimensional edge and geometric boundary beautifully define the lines between light and shadow, creating uniquely designed leather goods.

The DIAMOND | Origami Leather Bag is crafted from eco-friendly vegan leather sourced from Taiwan, featuring anti-mildew properties. Its lightweight design eliminates the heaviness, typically associated with backpacks. By simply pulling open the beechwood drawstring block, users can easily access the items inside. The bag offers a moderate capacity, perfectly sized for daily essentials, and when worn, it resembles a refined, stylish sculpture.





「蘑菇」誕生於台北，秉持著凡事從頭開始的精神開發具有獨特風格的商品，從T恤、帆布袋包、天然染服飾等生活類產品，甚至是織布、染色、版型都親自挑選定製，每一件作品都能講述它自己的故事。其中，精緻的「可調節粗麻單肩圓筒包」，更彰顯出設計的美感與自然材質的魅力。

「可調節粗麻單肩圓筒包」以柔軟的厚麻布製作，讓摺疊收納上更方便，兼具實用性和美感。麻布結合傳統染織工藝技術，讓布料更佳堅韌耐久；使用生長在臺灣低海拔地區的「薯榔」染煮，染煮過程中產生的單寧和膠質，可以強化織物的纖維；這項技術來自古早的漁夫，運用薯榔染的魚網，以達到漁網防蟲防腐的效果。

圓筒包提供雙色可選擇，喜歡自然格調可以選擇無印染原色，喜歡強烈意象可以選擇薯榔染作為搭配；袋底採用藍染棉布，深色設計不易弄髒也好清理，實用性極高；背帶仿古銅圓環可調節長短，以適應不同身形；袋口的鐵鏽色縫扣可防止包內東西掉落；內層還有設有分隔口袋，方便放置小物。將傳統工藝融入日常物品，每一個小細節都經過精心設計，無論是外出旅行還是日常通勤，都成為生活態度的一種體現。



蘑菇 MOGU\_可調節粗麻單肩圓筒包 *MOGU\_ Adjustable Hemp Single-Strap Cylinder Bag*

## 以獨特簡約之美 藏於每個布袋之間

「可調節粗麻單肩圓筒包」以柔軟的厚麻布製作，袋身以經薯榔染煮的厚麻布製成，布料柔軟，摺疊收納方便；袋底是藍染棉布，背帶有枚仿古銅圓環可調節長短，袋口中間有鐵鏽色縫扣可以扣上，內有一分隔口袋。

*Adjustable Hemp Single-Strap Cylinder Bag* is crafted from soft, thick hemp fabric. The body of the bag is dyed with Shoulang Yam, giving it a soft texture that makes it easy to fold and store. The bottom of the bag features indigo-dyed cotton fabric, adding a unique style. The strap is fitted with antique copper rings, allowing for adjustable length to suit your needs, enhancing its practicality. The top of the bag includes a rust-colored button for easy closure, and the interior features a partition pocket for better organization of your items.

蘑菇 MOGU

電話 / 02-25570155

Email / mogudear@gmail.com

地址 / 臺北市大同區南京西路 25 巷 18 號

No. 18, Ln. 25, Nanjing W. Rd., Datong Dist., Taipei City, Taiwan (R.O.C.)



### 商品規格

材質 / 100% 麻

100% Hemp fabric

尺寸 / 30 X 30 X 35cm

參考售價 / 薯榔色(Color dyed by Shoulang Yam):NTD 2,600 / 件  
原麻色(Color of hemp fabric):NTD 2,000 / 件



MOGU was founded in Taipei. Committed to innovation in every endeavor, the brand creates uniquely styled products. From T-shirts and canvas bags to naturally dyed clothing, the brand carefully selects and customizes each element—from weaving and dyeing to pattern design—ensuring that every piece tells its own story. Among these creations, the finely crafted Adjustable Hemp Single-Strap Cylinder Bag stands out, showcasing both the beauty of design and the appeal of natural materials.

The Adjustable Hemp Single-Strap Cylinder Bag is made from soft, durable hemp fabric, making it not only easy to fold and store but also practical and aesthetically pleasing. The hemp fabric incorporates traditional dyeing techniques, which enhance its durability and strength. The bag is dyed using Shoulang Yam sourced from low-altitude regions in Taiwan. This process strengthens the fabric's fibers and imparts a unique color. The technique originates from ancient fishermen who used Shoulang Yam to dye their fishing nets, achieving insect-repellent and anti-corrosive effects.





吟遊文創\_她們 CCCDPS\_The Memories

## 將絨花手工藝 化作送給母親的浪漫

「她們」為絨毛與纖維的手工藝，透過手工技術創作，將每一朵花的樣貌娓娓道來；創作靈感來自工藝師小時候家中常見的花卉，包含文心蘭、陸蓮和百合，紀念與感謝母親對家庭的付出與奉獻。溫柔細緻的絨花擺飾，為家中添上一抹高雅氛圍。

*The Memories* is a creative brand focused on the art of felt and fiber, skillfully crafting each flower to vividly express its unique appearance through meticulous techniques such as cutting, pinching, and sewing. The inspiration for these creations comes from flowers commonly found in the artisan's childhood home, including orchids, water lilies, and lilies. These flowers evoke cherished memories and symbolize gratitude for the mother's dedication and contributions to the family. The gentle and delicate Ronghua (velvet flower) decorations add an elegant touch to any home.

吟遊文創 CCCDPS

電話 / 04-24518458、0910-842589

Email / livchen1985@gmail.com

地址 / 臺中市西屯區西安街 277 巷 2 號 (5 號工作室)

No. 2, Ln. 277, Xi'an St., Xitun Dist., Taichung City, Taiwan (R.O.C.)



絨花，是絨毛與纖維的手工藝，透過剪裁、捏合與縫合等細膩步驟，將每一朵花的樣貌娓娓道來；「吟遊文創」巧妙地選用各種色彩和質地絨毛與纖維，精心模仿自然花卉的姿態，創作出獨特的裝飾品、藝術品或壁掛畫，呈現視覺的享受。而「她們」則以不同樣式的絨花技藝展現母親的浪漫，洋溢著生動的立體感與柔和的觸感，彷彿在訴說著自然的故事。

作品創作靈感來自工藝師小時候家中常見的花卉，包含文心蘭、陸蓮和百合，這些花卉承載了童年記憶的深刻情感，工藝師將紀念與感謝母親對家庭的付出與奉獻的心意化作花卉，用心雕琢每一朵花，溫柔細緻的絨花質感傳遞出母親們無形卻也無所不在的愛與堅韌，並隨著時間、季節變換而展現不同的姿態。

作品附有畫框，能保護絨花免受灰塵侵擾，也讓這份生命力得以長久保存；「她們」隨著家中燈的光影閃耀，彷彿是時光的凝聚，將每一個瞬間都變成永恆，為家中添上一抹高雅的自然氛圍；用於民俗節慶或禮儀裝飾絨花工藝，在工藝師的創意下進入居家生活中，除了表達對於母親的致敬，也希望啟發大家珍惜眼前，感謝在生活中默默支持我們的人，讓這些絨花保存心中不滅的記憶。

Ronghua (velvet flower) is a type of handicraft that combines fluff and fiber, presenting the unique appearance of each flower through delicate steps such as cutting, pinching, and sewing. CCCDPS cleverly selects various colors and textures of velvets and fibers, meticulously mimicking the posture of natural flowers to create unique decorations, artworks, or wall hangings, offering a visual delight.

Meanwhile, *The Memories* showcases the romance of motherhood through different styles of Ronghua (velvet flower) techniques, exuding a vivid three-dimensional effect and soft tactile sensation, as if telling the story of nature itself. The inspiration for this creation comes from the flowers commonly seen in the artisan's childhood home, such as orchid, buttercup, and lily, which carry profound childhood memories and emotions. Each piece is framed, effectively protecting the felt flowers from dust but also allowing this vibrant work of art to be preserved for a long time.

### 商品規格

材質 / 縲縲絲線、銅絲、木框

Soft silk thread and copper wire with framed

尺寸 / 單件 39 x 28 x 10 cm

三幅擺設總尺寸 100 x 30 x 15 cm

參考售價 / 文心蘭(黃)(Oncidium/yellow):NTD 15,000 / 件

陸蓮(紅)(Buttercup/red):NTD 15,000 / 件

百合(綠)(Lily/green):NTD 9,000 / 件







Hon Studio\_鵝卵石置物盒 Hon Studio\_Cobblestone Storage Box

## 將大自然融入日常 順應時間的痕跡與柔美

「鵝卵石置物盒」以臺灣河川裡的石頭為靈感，將時間的痕跡轉化為鵝卵石的樣貌，透過重組與再生的理念，以二層皮革層層堆疊，打造出仿生的鵝卵石；運用天然素材，細膩地紀錄自然在時間中流轉的軌跡。

The design inspiration for the *Cobblestone Storage Box* comes from the stones found in Taiwan's rivers, transforming the traces of time into a bionic pebble appearance. This storage box employs the concepts of recombination and regeneration, constructed from two layers of leather stacked together, showcasing a natural aesthetic. It utilizes natural materials, delicately recording the marks of nature as they flow through time.

### Hon Studio

電話 / 0929-823559

Email / honstudio.86@gmail.com

地址 / 新北市蘆洲區三民路 26 巷 4 號

No. 4, Ln. 26, Sanmin Rd., Luzhou Dist., New Taipei City, Taiwan (R.O.C.)



「Hon Studio」的設計理念，源自於人與自然之間那份靜謐而和諧的共生之美，致力於在每一個環節中，追求永續與再生的理念，讓每一次創作都成為對環境的深情回應。「鵝卵石置物盒」以臺灣河川的石頭為靈感，將時間的痕跡化作鵝卵石的柔美，呈現出歲月的積累與沉澱。

「鵝卵石置物盒」透過重組與再生的理念，以二層皮革層層堆疊，打造出仿生的鵝卵石；運用天然素材，細膩地紀錄自然在時間中流轉的軌跡。望向置物盒，有如凝望著蘭陽溪流中，石子在水中悠然滾動的樣子，歷經河流的洗禮、沖刷、碰撞，漸漸成就了獨一無二的型態與樣貌而這些自然中的石子，也如人與生命，由獨特的個體，隨著歲月的洗滌，變得圓潤而豐富，學會了歷練，也懂得了圓滑。

每次打開「鵝卵石置物盒」，無論是放置小物件還是存放珍貴回憶，都能體會到那份來自自然的和諧與時間的軌跡，草綠色、深藍、曜黑色、褐色的繽紛鵝卵石，成為案桌上的一抹風景，鼓勵人們欣賞生活中的細微之美，將生活中的藝術感融入每一天。

*Hon Studio's* design philosophy is inspired by the serene, harmonious coexistence between humans and nature. Committed to sustainability and regeneration in every detail, the studio imbues each creation with a heartfelt response to the environment. Drawing inspiration from stones in Taiwan's rivers, their *Cobblestone Storage Box* captures the soft, enduring beauty of pebbles shaped over time, reflecting the richness and depth that come with the passage of years.

The *Cobblestone Storage Box* is crafted from two layers of leather, layered to evoke the natural contours of pebbles. Using natural materials, it beautifully captures the subtle marks of nature's passage through time. Each time you open the *Cobblestone Storage Box*—whether to store small items or cherished memories—you can experience a sense of harmony drawn from nature and the journey of time. The vibrant colors of grass green, deep blue, and earthy brown create a striking landscape on your desk.

### 商品規格

材質 / 植鞣革  
Vegetable-tanned leather

尺寸 / 13.5 X 9 X 5.5 cm

顏色 / 褐色、草綠色、深藍/曜黑色

參考售價 / NTD 4,280 / 件







Hon Studio\_吐司托盤 Hon Studio\_Toast Shape Tray

## 以自然俐落優雅之美 收納生活的詩意

「吐司托盤」共有三種尺寸、三種配色，隨心組合分類放置；深度加高的托盤設計，有效提升收納的功能性；採用義大利頭層皮革，皮革雙面貼合壓製而成，達到一體成型無縫線設計外觀，有趣圓潤的造型與大膽的色彩配置，使其成為任何居家環境中的亮點。

The *Toast Shape Tray* comes in three sizes and three colors, allowing for flexible combinations and organized placement. The deepened and heightened tray design effectively enhances storage functionality. Made from Italian top-grain leather, the leather is bonded on both sides and pressed to achieve a seamless design with no visible stitching. Its interesting rounded shape and bold color combinations make it a standout feature in any home environment.

### Hon Studio

電話 / 0929-823559

Email / honstudio.86@gmail.com

地址 / 新北市蘆洲區三民路 26 巷 4 號

No. 4, Ln. 26, Sanmin Rd., Luzhou Dist., New Taipei City, Taiwan (R.O.C.)



真正的美在於永續的關懷，「Hon Studio」從材料採集到製造整體生產過程均採用天然和純淨的材質，設計元素取材自自然，透過仿生學、重組等概念，實現人與自然和諧共處的核心理念，並融入人們的日常生活。而「吐司托盤」採用雙面貼合工藝，將木紋的自然紋理融入設計，觸摸時得以感受木頭溫潤的質感。

「吐司托盤」的外觀與烘培坊剛出爐的吐司極為相似，便因此得名。共有三種尺寸、三種配色，可隨心組合分類放置，讓收納分類更便利；深度加高的托盤設計，有效提升收納的功能性，無論是放置零食、文具還是眼鏡，托盤都能完美容納。

托盤採用義大利頭層皮革，皮革雙面貼合壓製而成，達到一體成型無縫線設計外觀，俐落而隱約透露著優雅；有趣圓潤的造型與大膽的色彩配置，使其成為任何居家環境中的亮點，無論是在餐桌上、書桌上，還是客廳的展示架上，都能增添一份藝術氣息，是對美好生活的體現。

### 商品規格

材質 / 植鞣革

Vegetable-tanned leather

尺寸 / S: 7.1 x 4.7 x 2.2 cm

M: 10.3 x 7.75 x 2.3 cm

L: 16.8 x 11.1 x 2.4 cm

顏色 / 褐色、草綠色、曜黑色

參考售價 / S: NTD 780 / 件、M: NTD 980 / 件、L: 1880 / 件



From material sourcing to the entire production process, *Hon Studio* uses natural and pure materials. Drawing design elements from nature and applying concepts such as biomimicry and reconfiguration, *Hon Studio* embraces a core philosophy of harmony between people and nature, seamlessly integrating this beauty into daily life.

The *Toast Shape Tray* utilizes a double-sided bonding technique, cleverly incorporating the natural grain of wood into its design, allowing users to feel the warm texture of wood upon touch. Its appearance closely resembles freshly baked toast from a bakery, hence the name. This tray is made from first-layer Italian leather, and whether placed on a dining table, desk, or display shelf in the living room, it adds an artistic touch to any space, fully embodying the pursuit of a beautiful life.





iLife手感設計\_鳳凰記憶 iLife Design\_ Flame Tree Memory

## 捕捉自然的永恆時刻 收藏生活的每一份幸福

「鳳凰記憶」以鳳凰花經標本乾燥後永久封存在玻璃裡，玻璃鑲嵌技法永久封存美麗姿態，成為生活中空間裡永恆收藏品，描繪在六月鳳凰花開的季節裡，校園裡的歌聲悠揚的景緻。

*Flame Tree Memory* features phoenix flowers that have been preserved through a drying process and permanently encased in glass. Using glass-inlay techniques, it retains flowers' beautiful form, becoming an eternal collectible for your living space. This piece captures the essence of the season when phoenix flowers bloom in June, showcasing the lovely scenery of melodious singing on the campus.

iLife手感設計 iLife Design

電話 / 06-2084787、0919-126081

Email / shop@ilife.com.tw、eunice1077@gmail.com

地址 / 臺南市東區長榮路二段 128 號

No. 128, Sec. 2, Changrong Rd., East Dist., Tainan City, Taiwan (R.O.C.)



每年六月，鳳凰花開，火紅的鳳凰花如烈焰般綻放，將整條街道點綴得鮮豔如畫，來自台南的品牌「iLife手感設計」，便以玻璃工藝記錄下這美麗的一刻，將精湛手工藝運用於手感禮物的製作，用來捕捉自然瞬間並喚起心底那份對生命的熱愛與感動。

「鳳凰記憶」使用經過標本乾燥後的鳳凰花，以玻璃鑲嵌技法將其永久封存在玻璃裡，維持花卉的美麗姿態，成為生活空間裡永恆的收藏品，為閱讀桌帶上一抹紅妝點，輕巧的小鳥繪圖也為寧靜的生活帶來一點生動。隨著每一朵鳳凰花的形體都不同，形成獨一無二的樣貌，展現了精緻的手工藝創意，以傳遞著植物的天然之美。

鳳凰花也是畢業季節代表的花卉，為親愛的同學送上意味祝福的「鳳凰記憶」，將青春的回憶悄然收藏，花瓣象徵著美好，也代表著青春印記，透過封存了鳳凰花的美麗，依稀記得，那些年輕的笑聲與澄澈的心靈，始終與我們同在。

### 商品規格

材質 / 木材、玻璃、鳳凰花標本(天然素材每朵形體都不同)  
Wood, glass, and phoenix flower specimens (natural materials, each flower has a different shape)

尺寸 / 玻璃尺寸 28 X 10 cm

含木底座尺寸 28 X 12 X 2.5 cm

參考售價 / NTD 1,380 / 件



Every June, the blooming of flamboyant flowers adds a vibrant blaze of red to the streets, like flames in full bloom. Inspired by this vibrant scene, the Tainan-based brand *iLife Design* captures it through the art of glassmaking, using exquisite craftsmanship to create heartfelt keepsakes. These pieces aim to preserve nature's fleeting beauty and inspire a deep appreciation for life.

*Flame Tree Memory* features phoenix flowers that have been preserved through a drying process, permanently encased in glass, using a glass-inlay technique, making it a unique collectible for your living space. This piece adds a touch of red to your reading table. Each phoenix flower has a distinct shape, ensuring that every piece is one-of-a-kind, showcasing exquisite craftsmanship and conveying the natural beauty of plants.





以「創造簡約富想像力、友善人與環境的生活物件」為設計理念，「A.M IDEAS」從自然及傳統工藝中發掘靈感，將反覆試驗出的有機造型技法，轉化成當代飾品。而「O O 竹耳環」重新詮釋現代的永續風格，展現臺灣竹的新風貌，讓日常生活多一些個性與風格，創造美好記憶與樂趣。

「O O 竹耳環」以雙色雙圓弧設計，巧妙簡約，輕盈別緻，散發出空氣感，無論是日常穿搭或特殊場合皆適宜；每一批次限量製作，顏色隨機組合，綠竹色與竹本色的搭配自然隨性，淺紫與粉色組合優雅柔美，橘色與深藍色閃現活潑迷人氛圍，綠與深藍則帶來神秘感，灰黑與白色則彰顯專業氣息。

佩戴時，耳環隨著每一個動作旋轉搖曳，自信與優雅交融；耳環也展現多樣的個性，不僅適合日常搭配，也能在特別的場合中為佩戴者增添亮點，每個人都能在生活中，找到屬於自己的獨特風格。

#### 商品規格

材質 / 臺灣桂竹、環保金屬紙、14K金包金

Taiwan Guizhu, environmentally friendly metallic paper, 14K gold-filled

尺寸 / 3.5 X 0.8 X 1 cm

參考售價 / 含淡水珍珠 (With pearls): NTD 2,080 / 對  
不含淡水珍珠 (Without pearls): NTD 1,880 / 對  
顏色隨機



A.M IDEAS\_O O 竹耳環 A.M IDEAS\_O O Bamboo Earrings

## 綠色永續拼接時尚單品 竹耳環表露自然的魅力與個性

「O O 竹耳環」從自然及傳統工藝中發掘靈感，以雙色雙圓弧設計，無論是日常穿搭或特殊場合皆適宜；每一批次限量製作，顏色隨機組合，重新詮釋現代的永續風格，展現臺灣竹的新風貌。

The *O O Bamboo Earrings* are inspired by nature and traditional craftsmanship, featuring a minimalist double-color, double-arc design that suits both everyday wear and special occasions. Produced in limited quantities, each batch combines colors in unique, random pairings, showcasing a sustainable, modern style that celebrates the beauty of Taiwanese bamboo in a fresh, contemporary light.

A.M IDEAS

Email / hello@amideas.com



With a design philosophy focused on "creating simple, imaginative, and eco-friendly lifestyle objects," A.M IDEAS draws inspiration from nature and traditional craftsmanship. Through iterative experimentation, the brand transforms organic shapes into contemporary jewelry. The *O O Bamboo Earrings* embody a heartfelt approach to sustainable, modern style, presenting Taiwan's bamboo in a fresh, innovative way. These pieces add character and joy to daily life, creating beautiful memories.

The *O O Bamboo Earrings* feature a clever, minimalist double-color, double-arc design that exudes a light, elegant aesthetic. When worn, they sway gracefully with each movement, blending confidence and elegance. Their versatile style makes them perfect for everyday wear and equally fitting for formal occasions, allowing wearers to express their unique personality in all aspects of life.





陳彫刻處\_雙層橢圓角盤 CHEN'S WOOD\_ Oval Wooden Plate

## 將長壽的印記，融入於食器設計 以工藝讓古老的祝福延續到現代

「雙層橢圓角盤」將傳統龜模的長壽祝福融入現代餐具設計，既實用又美觀，為日常飲食增添儀式感。每一件都以手工雕刻而成，保留著雕刻技藝的細膩與純粹，將古老的祝福延續到現代生活中。

The *Oval Wooden Plate* integrates the traditional tortoiseshell pattern's blessing of longevity into modern tableware design, combining practicality and aesthetics to bring a sense of ritual to everyday dining. Each piece is meticulously hand-carved, preserving the finesse and purity of the craft, and extending this ancient blessing into contemporary life.

陳彫刻處 CHEN'S WOOD

電話 / 0936-827189

Email / comma.goods@gmail.com

地址 / 臺中市區仁愛街 8-7 號

No. 8-7, Ren'ai St., Central Dist., Taichung City, Taiwan (R.O.C.)



創始於日治時期，歷經百年的時光淬鍊，延續著三代匠人的雕刻工藝，「陳彫刻處」的雕刻技藝承載了過去的信仰、文化和人情，從古老的傳統物件到當今的日常器物，每一件作品都是時代記憶與生活美學的結晶，這些技藝不僅留存在歷史中，更融入現代生活。

「雙層橢圓角盤」盤面的紋理取材自傳統龜甲，寓意著長壽與吉祥，將傳統龜模的長壽祝福融入現代餐具設計，既實用又美觀，為日常飲食增添儀式感，而手工雕刻則保留技藝的細膩與純粹，凸顯手作器物的溫度與質感。傳統的手工雕刻工藝在當代再度綻放光彩，將生活中的點滴祝福，化作觸手可及的實用之美，讓工藝扎根於日常，喚醒人們對美好事物的感知。

無論是日常用餐、茶會擺設，還是禮品贈與，「雙層橢圓角盤」都能傳遞出對傳統工藝的欣賞與對生活質感的追求，陳彫刻處將百年技藝與現代美感結合，透過這款作品將傳統文化精髓融入日常，在生活中感受到工藝之美與傳承之力。

With a legacy spanning a century from its founding during the Japanese colonial period, *Chen's Wood* has upheld the carving craftsmanship of three generations, preserving the faith, culture, and human connections of the past. From traditional relics to contemporary household items, each piece embodies historical memory and the aesthetics of daily life. These skills are not only preserved through history but are also beautifully woven into modern living.

The *Oval Wooden Plate* showcases a textured design inspired by traditional tortoiseshell patterns, symbolizing longevity and good fortune. It combines function with beauty, making it ideal for daily dining, tea gatherings, or as a meaningful gift. The platter reflects a reverence for traditional craftsmanship and an appreciation for refined living. Its intricate carvings seamlessly blend centuries-old techniques with contemporary aesthetics, infusing traditional cultural essence into daily life. Through this piece, people can experience the timeless beauty of craftsmanship and the enduring spirit of cultural heritage.

The *Oval Wooden Plate* integrates the traditional tortoiseshell pattern's blessing of longevity into modern tableware design, combining practicality and aesthetics to bring a sense of ritual to everyday dining. Each piece is meticulously hand-carved, preserving the finesse and purity of the craft, and extending this ancient blessing into contemporary life.

商品規格

材質 / 胡桃木

Walnut

尺寸 / 25 X 17 X 1.8 cm

參考售價 / NTD 2,400 / 件







植物語彙\_荷瓣茶匙 Silver Plants\_ Tea Spoon

## 金工技藝與茶道融合 打造優雅品茗的儀式感

「荷瓣茶匙」的設計靈感源自於荷花花瓣，以金工鍛造，整體取形為手取茶的姿態，尾端設計成手指捲取的形狀，提升了器物質感，也為茶席佈滿詩意；輕盈將茶湯輕播於茶碗中，讓人在繁忙的生活中找到一絲寧靜。

The *Tea Spoon's* design draws inspiration from the delicate petals of the lotus flower and is crafted through meticulous metal forging techniques. Its shape mimics the gesture of picking up tea by hand, with the tail end designed to resemble a curling finger. This design not only enhances the spoon's texture but also brings a poetic elegance to the tea ceremony. Gently scattering tea leaves into the bowl provides a moment of tranquility amidst the busyness of life.

植物語彙 Silver Plants

電話 / 0933-045359

Email / silverplants@gmail.com

地址 / 臺北市大安區復興南路一段 321 號 1 樓 A3

Rm. 3, 1F-A, No. 321, Sec. 1, Fuxing S. Rd., Da'an Dist., Taipei City, Taiwan (R.O.C.)



茶具器物的儀式感，從設計細節和材質中了解，一席茶席，不只是品茗的芬芳，也是愛茶之人的講究的場域；「植物語彙」將金工技藝與茶道結合，以職人造物的精神打造「荷瓣茶匙」。

「荷瓣茶匙」的設計靈感源自於荷花花瓣，古人稱荷花為「花中君子」，直挺於池塘中亭亭玉立的模樣，象徵著出淤泥而不染的節操，也代表著茶道之人高尚正直的氣度。工藝師以金工鍛造，整體取形為手取茶的姿態，尾端設計成手指捲取的形狀，提升了器物質感，也為茶席佈滿詩意。

輕盈將茶湯輕播於茶碗中，品茗者緩慢且富有儀式感的動作，讓人在繁忙的生活中找到一絲寧靜。茶席之中，每一個動作、每一件器物都表達著深刻的意義，試著放慢腳步，享受每一口好茶帶來的愉悅。

The ritual of tea utensils is expressed through their design details and choice of materials. A tea setting is not only a place to enjoy the aroma of tea but also a refined space for tea enthusiasts. *Silver Plants* combines metalworking craftsmanship with the art of tea, capturing the spirit of artisanal creation in its *Tea Spoon* with lotus petal design.

The design inspiration for the *Tea Spoon* comes from the petals of the lotus flower. In ancient times, the lotus was known as the "gentleman among flowers," standing tall and graceful in the pond, symbolizing purity and integrity as it rises, untainted, from the mud. It represents the noble and upright demeanor valued in the practice of the tea ceremony. The artisan employs metalworking techniques to shape the spoon to resemble the gesture of hand-picking tea, with the tip designed to evoke a curled finger. This design not only enhances the utensil's quality but also adds a poetic touch to the tea setting.

The *Tea Spoon's* design draws inspiration from the delicate petals of the lotus flower and is crafted through meticulous metal forging techniques. Its shape mimics the gesture of picking up tea by hand, with the tail end designed to resemble a curling finger. This design not only enhances the spoon's texture but also brings a poetic elegance to the tea ceremony. Gently scattering tea leaves into the bowl provides a moment of tranquility amidst the busyness of life.

商品規格

材質 / 純銀，純手工金工鍛造

Pure silver, purely hand-forged by metalworking

尺寸 / 12.5 X 5 X 4 cm

參考售價 / NTD 17,280 / 件







植物語彙\_蚪蚪茶漏&小茶則 Silver Plants\_Tea Spoon & Tea Leak

## 茶席雅物融合設計與功能 展現生活的美好時刻

「蚪蚪茶漏&小茶則」以逗趣的蝌蚪金工造型，融入傳統的茶道當中；茶則的造型取自蝌蚪，主要用來取茶，避免手部的水或污漬沾到茶葉；茶漏以金工鏤空技法表現游動的蝌蚪，可置於茶海或茶杯口，有疏導阻隔茶葉的用途。

The *Tea Spoon & Tea Leak* feature a playful tadpole design that adds charm to traditional tea rituals. The Tea Spoon, inspired by the shape of a tadpole, is used to handle tea leaves, preventing moisture or dirt from the hands from contaminating the tea. Meanwhile, the Tea Leak, crafted using metal hollowing techniques, showcases a design of swimming tadpoles. It can be placed over a tea pitcher or cup, functioning as a barrier to prevent tea leaves from entering the drink.

植物語彙 Silver Plants

電話 / 0933-045359

Email / silverplants@gmail.com

地址 / 臺北市復興南路一段 321 號 1 樓 A3

1F-A3, No. 321, Sec. 2, Bade Rd., Da'an Dist., Taipei City, Taiwan (R.O.C.)



茶工藝道具兼顧設計和功能之用，俗稱茶道六君子的茶漏和茶則，可以讓整個泡茶流程更為便利，是茶席當中不可或缺的道具。「植物語彙」以逗趣的蝌蚪金工造型，融入傳統的茶道當中，讓「蚪蚪茶漏&小茶則」具備實用性，也增添了趣味元素。

「蚪蚪茶漏&小茶則」為相同造型不同用途的茶席小物，茶則的造型取自蝌蚪，主要用來取茶，避免手部的水或污漬沾到茶葉，造成茶葉受潮變質；茶漏以金工鏤空技法表現游動的蝌蚪，可放置於茶海或茶杯上方，有疏導阻隔茶葉的用途，不讓茶渣掉落於其中。

茶席之中，使用茶則進行取茶動作，接著可使用茶漏在倒茶時更為俐落，當熱水沖泡時，茶的香味撲鼻而來；一氣喝成的流暢動作，提升了茶席質感，也感受到器物帶來的美好時刻。

### 商品規格

材質 / 純銀

Pure silver, purely hand-forged by metalworking

尺寸 / 茶漏 7.5 X 5.7 X 3 cm 小茶則 7.5 X 5.7 X 3 cm

參考售價 / NTD 13,400 / 組



Tea utensils balance design and functionality. Among the “Six Gentlemen of the Tea Ceremony,” the tea strainer and tea scoop enhance the tea-brewing process and are essential in any tea setting. Silver Plants introduces a playful touch to traditional tea culture with its whimsical, tadpole-inspired *Tea Spoon & Tea Leak*, adding both practicality and charm to the tea experience.

The *Tea Spoon & Tea Leak* are two accessories with similar forms but distinct functions. Inspired by the shape of a tadpole, the Tea Spoon is designed to handle tea leaves while preventing moisture or dirt from the hands from contaminating them. Crafted with metal hollowing techniques, the Tea Leak features a delicate design resembling swimming tadpoles. Positioned over a tea pitcher or cup, it filters out tea leaves, ensuring a clear and smooth drink.





拿鞘\_鞘盒子(長) Nature\_Sheath Box

## 如葉鞘一般順著自然的紋理 為日常空間增添柔和的自然氣息

「鞘盒子」設計靈感來自於臺灣原住民的智慧與工藝，由自然掉落的檳榔葉鞘製成，無需膠黏合劑，展現出葉鞘天然的木質肌理與輕盈的質地，收納、承裝食材或作為禮物盒的好選擇，為日常空間增添柔和的自然氣息。

The design of the *Sheath Box* is inspired by the wisdom and craftsmanship of Taiwan's indigenous people. Made from naturally fallen betel palm leaf sheaths, it requires no adhesive, allowing the natural wood grain and lightweight texture of the leaves to shine through. This box is not only perfect for storing ingredients but also serves as an ideal gift box, bringing a gentle touch of nature to everyday spaces.

拿鞘 Nature

電話 / 0930-330360

Email / intosea8@gmail.com

地址 / 花蓮縣鳳林鎮中美路 17 號

No. 17, Zhongmei Rd., Fenglin Township, Hualien County, Taiwan (R.O.C.)



「拿鞘」的誕生來自於一個簡單但深刻的理念—尊敬大自然的智慧，延續傳統文化的精神，拾起檳榔葉鞘，透過手工藝的轉化，賦予自然資源新生命，打造出具備環保與美學價值的產品。拿鞘秉持著對土地與環境的尊重，不僅希望製作實用的綠色產品，也致力於與各個領域建立合作，藉由臺灣土地的色彩與原野文化，與大家分享大地的原始本質。

「鞘盒子」設計靈感來自於臺灣原住民的智慧與工藝，由自然掉落的檳榔葉鞘製成，經過風乾處理，彎折處自然成形，無需膠黏合劑，展現出葉鞘天然的木質肌理與輕盈的質地，使其如同自然的藝術品般獨一無二，呈現出自然界無法複製的魅力，結合了技術材質、生活美學與文化傳承，將功能性與美感完美融合，為每個空間帶來一絲自然的氣息。

透過檳榔葉鞘柔和的色澤與獨特的質感，「鞘盒子」讓我們在日常生活中隨時感受到自然的溫暖，以現代生活美學，回應自然環境與傳統文化的深度。

The creation of *Nature* is rooted in a simple yet profound philosophy—respecting the wisdom of nature and preserving traditional cultural values. By transforming betel nut sheaths through craftsmanship, Nature breathes new life into natural resources, producing products that embody both environmental and aesthetic value. Guided by a deep respect for the land and environment, Nature is dedicated not only to crafting practical, eco-friendly products but also to fostering collaborations across various fields. Through the colors and rural culture of Taiwan, they share the pure essence of the earth.

The *Sheath Box* is crafted from naturally fallen betel palm leaf sheaths that are dried to highlight their natural wood grain and lightweight texture. Each piece is a unique work of art from nature, showcasing its irreplaceable charm. By combining modern technology and materials, it perfectly merges functionality with aesthetics. The soft hues and distinctive texture of the betel palm leaf sheaths bring the warmth of nature into our daily lives.

商品規格

材質 / 檳榔葉鞘

Betel palm leaf sheath

尺寸 / C01 : 19 x 7 x 5 cm±10%、C02 : 17 x 6 x 5 cm±10%

參考售價 / C01 : NTD 400 / 件、C02 : NTD 350 / 件







竹貓\_海棠花 茶針置&筷架 Takeneko\_Begonia Tea Pick & Chopstick Holder

## 傳統與現代的交融 以竹藝讓用餐更具儀式感

「海棠花 茶針置&筷架」將現代科技與傳統工藝巧妙結合，以國產木材為基座，透過CNC技術切割出象徵美麗與吉祥的海棠花形狀，內部則使用回收的竹片，傳統的壓一挑一編織技法，更進一步強化了產品的質感。

The *Begonia Tea Pick & Chopstick Holder* skillfully blends modern technology with traditional craftsmanship. Its base is made from domestic hardwood, shaped into the form of the Begonia—a symbol of beauty and good fortune—using CNC technology. The interior is crafted from recycled bamboo strips, intricately woven together with traditional pressing and weaving techniques, which enhances the overall quality of the product.

竹貓 Takeneko

電話 / 0953-139445

Email / james@takeneko.com



「竹貓」的品牌由來始於對竹子的無限好奇與熱愛，如貓般敏捷地在竹林中穿梭，探索竹子與編織工藝的無窮潛力，致力於將竹材帶進現代生活。用心編織每一件作品，傳遞「物用之美」的理念，將竹子的生命延續，成為點綴生活的用具，以及承載故事的器具，豐富生活的每一個細節。

「海棠花 茶針置&筷架」將現代科技與傳統工藝巧妙結合，以國產木材為基座，透過CNC技術切割出象徵美麗與吉祥的海棠花形狀，確保每個細節的精度與統一性；內部則使用回收的竹片，經過染色處理，展現出繽紛的色彩與細膩的紋理。而傳統的壓一挑一編織技法，更進一步強化了產品的質感，獨特的紋理和色彩變化，讓每一個筷架如藝術品般，散發出細膩且深具文化內涵的美感。

餐具也能成為生活中的藝術品，將傳統工藝融入現代家居，「海棠花 茶針置&筷架」為每一次用餐增添儀式感，成為餐桌上的點睛之筆，也作為承載故事的器具，傳遞文化的深度、竹材的可塑性，讓我們在日常生活中感受到傳統文化的魅力，與環保和永續設計結合的實踐。

### 商品規格

材質 / 竹、木

Bamboo, wood

尺寸 / 3 X 3 X 0.7 cm

參考售價 / NTD 650 / 件



The brand *Takeneko* was born out of an endless curiosity and love for bamboo, weaving through bamboo groves like a cat, exploring the boundless potential of bamboo and its craftsmanship. Committed to incorporating bamboo into modern life, *Takeneko* carefully crafts each piece to embody the philosophy of "the beauty of utility." By extending the life of bamboo, the brand transforms it into practical tools and objects that carry stories, enriching every detail of daily life.

The *Begonia Tea Pick & Chopstick Holder* is crafted from domestic hardwood, treated with dye to highlight vibrant colors and delicate textures. This design elevates the product's quality, making each chopstick rest a unique piece of art, rich in cultural significance. The *Begonia Tea Pick & Chopstick Holder* adds a sense of ritual to every meal, becoming a striking feature on the dining table.





臯月\_緋寒 SATUKI\_ Fēi Hán

## 將花朵之姿凝固浪漫 讓每一刻都隨之綻放

「緋寒」系列飾品以臺中市市花的「緋寒櫻」為靈感，捕捉其在寒冬中盛放的嬌豔姿態，使用黃銅線手工勾勒出櫻花的形狀，浸染人工合成樹脂液製成花瓣，並細緻地上色與強化，展現花朵在春寒料峭之際綻放的美好。

The *Fēi Hán* series of jewelry is inspired by Taichung City's flower—the *Fēi Hán* cherry blossom—capturing its vibrant beauty as it blooms in the cold winter. Artisans handcraft the shape of the cherry blossoms using brass wire, then immerse the petals in synthetic resin, meticulously coloring and reinforcing them to showcase the beauty of the flowers blossoming amidst the lingering chill of spring.

臯月 SATUKI

Email / [satuki2017.official@gmail.com](mailto:satuki2017.official@gmail.com)

地址 / 臺中市西區昇平里民生路 368 巷 2 弄 1 號 2 樓 (審計新村)  
2F, No. 1, Aly. 2, Ln. 368, Minsheng Rd., West Dist., Taichung City,  
Taiwan (R.O.C.) (Shen Ji New Village)



承載著對花的深厚熱情，透過銅線花與浸染藝術，將自然與工藝完美結合，「臯月」的創作深受浪漫主義影響，強調個人情感與美感的自由表達；以花為靈感來源，將自己的聲音注入每一件作品中，並通過精湛的手藝賦予作品獨特的生命力。

「緋寒」系列飾品以臺中市市花-山櫻花又稱「緋寒櫻」為靈感，捕捉其在寒冬中盛放的嬌豔姿態，工藝師使用黃銅線手工勾勒出櫻花的形狀，經過十道以上的工序，浸染人工合成樹脂液製成花瓣，並細緻地上色與強化，最終組裝成品。從設計到完成，所有的細節皆經過精雕細琢，每一朵緋寒櫻都獨一無二彷彿看見春寒料峭之際，滿樹紅花綻放的生命力與美感。

將臺灣原生的自然美景與工藝巧妙融合，傳承文化與自然之美的「緋寒」，無論是作為日常穿搭的一部分，還是作為紀念某個特別時刻的象徵，都能為生活增添一絲浪漫與詩意，讓美好在生活每一刻綻放。

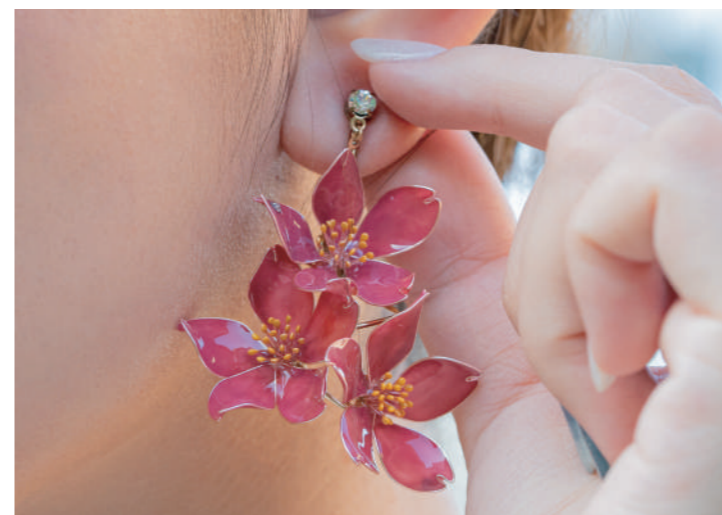
### 商品規格

材質 / 銅線、樹脂液

Copper wire, liquid synthetic resin

尺寸 / 5.5 X 3.3 X 1.5 cm

參考售價 / NTD 4,800 / 對



With a deep passion for flowers, SATUKI blends copper wire floral art with dyeing techniques, creating a seamless harmony between nature and craftsmanship. Inspired by Romanticism, the brand celebrates the free expression of personal emotion and aesthetics. Drawing inspiration from flowers, Satuki imbues every piece with its own voice, infusing unique life into every creation through exquisite artistry.

The *Fēi Hán* jewelry series showcases artisans handcrafting cherry blossom shapes from brass wire. Through more than ten intricate processes, the petals are immersed in synthetic resin, meticulously colored, and reinforced before being assembled into the final pieces. From design to completion, every detail is carefully refined, ensuring that each *Fēi Hán* cherry blossom is one-of-a-kind. One can almost feel the vitality and beauty of the red flowers blooming amidst the lingering chill of spring.





泥研植物社\_重塑水泥吊燈 PULP\_Concrete Pendant Light

## 透過再生循環重塑餘料 點亮永續生活

「重塑水泥吊燈」運用不可回收的纖維塑料作為創作核心，並融入混凝土中，再與磨石技法、廢棄皮革邊料相結合，打造出極具風格的吊燈，柔和光線為居家打造溫暖誘人氛圍。

The *Concrete Pendant Light* is crafted from non-recyclable fiber plastic, which is integrated into concrete using terrazzo techniques and combined with scraps of discarded leather to create a uniquely stylish pendant light. The soft light emitted by this pendant light creates a warm and inviting atmosphere in any home.

泥研植物社 PULP

Email / k980155@hotmail.com

地址 / 臺中市北區衛道路 218 號

No. 218, Weidao Rd., North Dist., Taichung City, Taiwan (R.O.C.)



以結合自然與文化的創作精神，專注於將工業材料轉化為日常生活中的美學作品。「PULP 泥研植物所」選用水泥作為主要素材，並融入不可回收的塑料，秉持著「再生」與「永續」的理念，將難以再利用的素材重新注入設計，並透過結合自然植物與文化元素，為生活增添趣味，同時傳承文化價值。

「重塑水泥吊燈」運用不可回收的纖維塑料作為創作核心，將其打碎後融入混凝土中，與磨石技法相結合，打造出極具風格的吊燈。設計過程中，還加入廢棄皮革邊料，使每一件作品更獨具匠心與個性化，展現出粗獷卻不失細節的美感，不規則的邊緣與粗糙痕跡讓人聯想水泥磚牆的獨特質感，可融入現代多元風格的室內空間，為家居裝飾提供不同選擇。

「重塑水泥吊燈」提供了實用照明功能，柔和的光線為家居打造溫暖且誘人的氣氛，享受到其設計美感與功能性的同時，也讓每一次的使用都代表著永續生活的開展。

With a spirit that fuses nature and culture, *PULP* is dedicated to transforming industrial materials into aesthetically pleasing everyday items. Using concrete as its primary medium, the brand incorporates non-recyclable plastics to embody renewal and sustainability, giving new purpose to materials that are otherwise challenging to reuse. By blending natural plant elements with cultural motifs, *PULP* infuses charm into daily life while preserving cultural values.

The *Concrete Pendant Light* is crafted from non-recyclable fiber plastic as its core material, resulting in a uniquely stylish pendant light. During the design process, scraps of discarded leather are incorporated, adding a touch of craftsmanship and personality to each piece while showcasing a rugged yet delicate aesthetic. The pendant light's irregular edges and rough textures evoke the distinctive feel of concrete brick walls, allowing it to seamlessly blend into modern, diverse interior spaces and providing a unique option for home decor.

### 商品規格

材質 / 水泥、皮革、纖維塑料

Cement, leather, fiber plastic

尺寸 / 26 X 26 X 13 cm

參考售價 / NTD 1,680 / 件







舒式\_人字紋竹製文具盒 RELEISURELY\_ Herringbone Pattern Bamboo Stationery Case

## 大人味的的生活文具 增添優雅細節品味與儀式

「人字紋竹製文具盒」使用經過水煮或煙燻程序的臺灣桂竹，不同粗細的竹篾編織，結合回收咖啡豆麻布袋與西班牙軟木布，形成四層膠合結構。保留竹子自然的光澤與質感，展現出琥珀色與深棕色的雙重風格，能作為眼鏡盒、收納盒使用。

The *Herringbone Pattern Bamboo Stationery Case* is crafted from Taiwanese bamboo that has undergone boiling or smoking processes, woven together with bamboo strips of varying thickness. It features a four-layer laminated structure that incorporates recycled coffee bean burlap and Spanish cork fabric. This design preserves the natural luster and texture of the bamboo, showcasing a dual style of amber and deep brown. The box serves a dual purpose, functioning as both a glasses case and a storage box.

舒式 RELEISURELY

Email / releisurely@gmail.com



「舒式」主張友善環境及永續生活，以臺灣桂竹作為主要原料，期望研發設計出符合當代品味且具有實用性的商品，以親民的方式貼近生活日常，也讓竹工藝品貼合現代的需求及美感，重新回歸於生活。

「人字紋竹製文具盒」使用經過水煮或煙燻程序的臺灣桂竹，不同粗細的竹篾編織，結合回收咖啡豆麻布袋與西班牙軟木布，形成四層膠合結構。保留竹子自然的光澤與質感，展現出琥珀色與深棕色的雙重風格，無論是高雅潔淨的琥珀竹，還是充滿皮革質感的煙燻竹，都能帶給人一種內斂又獨特的美感。在產品兩側則以人字紋編織側板和蝴蝶結竹釦，增添了細節上的精緻感。

考量竹子的天然質感、現代美感及使用需求，「人字紋竹製文具盒」的定位為「大人的文具」，能作為眼鏡盒、收納盒使用，為追求個性化、精緻設計的消費者提供另一種優雅而環保的選擇，成為重視品味與細節的現代人日常生活中的一抹自然韻味。

### 商品規格

材質 / 臺灣桂竹、西班牙軟木、麻、籐  
Guizhu (Taiwan), rattan bark (Indonesia),  
hemp fiber, painting、Spanish cork  
尺寸 / 19 X 8 X 5 cm  
顏色 / 深棕色(煙燻竹)、卡其色(水煮竹)  
參考售價 / NTD 2,250 / 件



RELEISURELY advocates for environmental sustainability, using Taiwan's Makino bamboo as its primary material. The brand's mission is to create products that suit contemporary tastes and practical needs, making bamboo crafts an accessible part of everyday life. This approach not only adapts bamboo craftsmanship to modern aesthetics but also reintroduces it into daily use.

The *Herringbone Pattern Bamboo Stationery Case* is made from Taiwanese bamboo that has been treated through boiling or smoking, combined with recycled coffee bean burlap and Spanish cork fabric to create a four-layer laminated structure. The dual styles of amber and deep brown—whether the elegant, clean look of amber bamboo or the leather-like texture of smoked bamboo—exhibit a subtle and unique beauty. The sides of the product feature herringbone woven panels and decorative bamboo buttons, adding exquisite details to its design.







以純粹手感傳遞自然之美，「石見坊」透過一雙手、一塊土，實踐器物與大自然的深刻連結。創作後留下的餘料是記憶載體，承載著品牌成長的軌跡，如日記般，記錄下不同時期的感受，這些「回憶的廢棄材料」也成為創造循環再生的契機，讓器物承載記憶，以新面貌延續其價值。

透過傳統陶藝技法與永續循環的融合，應運而生的「POTTERY計畫」讓陶瓷餘料不再是製作過程中的遺憾，而是透過工藝師的技術巧思再次回到生活中使用。陶的循環飲品杯有三款選擇：大地杯、雲裡杯、汝青杯，都有著讓人聯想到大地的色彩，展現自然的紋理與溫潤的質感，響應循環永續倡議的同時，工藝師也創造出融合大自然簡單質樸風味的生活器皿。

「POTTERY計畫」透過手工製作保留了獨特的自然紋理，使每一件作品都成為獨一無二的存在；將對餘料的巧妙運用重新製作成杯具，賦予新生價值，讓每位使用者在使用的同時，參與這段回憶再生的旅程，為日常生活增添一份質樸的溫暖與深度。

#### 商品規格

材質 / 陶瓷廢料再生  
Ceramic waste  
尺寸 / 9 x 9 x 12.5 cm  
款式 / 大地杯、雲裡杯、汝青杯  
參考售價 / NTD 1,380 / 件



石見坊\_POTTERY計畫 SHIH JIAN STUDIO\_Pottery Plan

## 陶廢計畫展開 一段永續循環的再生旅程

「POTTERY計畫」透過傳統陶藝技法與永續循環的融合，創造關於陶的循環飲品杯-大地杯、雲裡杯、汝青杯；將對餘料的巧妙運用重新製作成杯具，賦予新生價值，讓每位使用者在使用的同時，參與這段回憶再生的旅程。

The POTTERY Plan creatively combines traditional pottery techniques with sustainable practices to produce various circular drinking cups, such as the Earth Cup, Cloud Cup, and Ruqing Cup. These cups cleverly utilize leftover materials, giving them new life and value. As users enjoy their drinks, they also participate in the journey of memory and rebirth.

石見坊 SHIH JIAN STUDIO

電話 / 0982-5199682

Email / j5023102@gmail.com、haw41414038@gmail.com

地址 / 臺中市龍井區新興路 22 巷 3 弄 5 號

No. 5, Aly. 3, Ln. 22, Xinxing Rd., Longjing Dist., Taichung City, Taiwan (R.O.C.)



With a focus on conveying the beauty of nature through pure craftsmanship, Shih Jian Studio uses hands and clay to forge a profound connection between objects and the natural world. Leftover materials from the creative process serve as vessels of memory, capturing the brand's evolution and documenting different periods like a journal. These "memory-laden discarded materials" become opportunities for circular regeneration, allowing each piece to carry its own story and continue its value in a renewed form.

The POTTERY Plan transforms ceramic waste materials from the production process into valuable items that enhance everyday life through artisans' creativity. This circular drinking cup features earth-inspired colors, reflecting natural textures and a warm feel. In alignment with sustainability initiatives, the artisans also create functional tableware that embodies the simple, rustic essence of nature.





玲瓏窯\_星海之環 Lin Long Yao\_ Starry Sea Glass Vase

## 穿透光與影的追逐 打造色彩流動的玻璃媒材

「星海之環」以坩堝窯爐玻璃漿為媒材，結合空心吹製及徒手拉製技法，打造出一體成型的瓶器；色彩以流動的藍色和銀色紋理相互襯托，加入夜光粉的襯托，可以是一件精緻的藝術品，也可以作為花瓶或擴香瓶使用。

The *Starry Sea Glass Vase* is crafted from crucible kiln glass paste, utilizing hollow blowing and hand-pulling techniques to create a seamless bottle form. Its colors showcase a flowing interplay of blue and silver textures, enhanced with luminous powder, enabling it to function as both an exquisite piece of art and a practical vase or diffuser.

玲瓏窯 Lin Long Yao

電話 / 03-5181258

Email / sb2376339@gmail.com

地址 / 新竹市香山區中華路六段 78-18 號

No. 78-18, Sec. 6, Zhonghua Rd., Xiangshan Dist., Hsinchu City, Taiwan (R.O.C.)



致力結合傳統文化元素和西方玻璃工藝，「玲瓏窯」將漾動的色彩層次，呈現在玻璃的創作上，展現工藝角度各種細膩的美好。在浩瀚無垠的宇宙中，深邃又神秘的「星海之環」以坩堝窯爐玻璃漿為媒材，結合空心吹製及徒手拉製技法，打造出一體成型的瓶器，展現出令人驚艷的藝術魅力。

「星海之環」色彩使用流動的藍色和銀色紋理相互襯托，加入夜光粉的襯托，彷彿對視覺施以魔法，一眨一瞬間，感受到光影明暗間的層次錯落；放置於桌邊角落，像是一件無可取代的精緻藝術品，可以對其凝視、放空或是沉澱，想像自己正於宇宙間遨遊，直接來場無人打擾的星際之夢。

不張揚，也不失存在感的圓潤外型，除了觀賞的功能，也可以作為花瓶或擴香瓶使用，成為家居裝飾中的亮點，暫時讓我們放下繁忙，靜靜地沉浸於難得的寧靜與美好。

*Lin Long Yao* blends traditional cultural elements with Western glass craftsmanship, bringing vibrant layers of color to life in its glass creations and showcasing delicate beauty from various artistic perspectives. Inspired by the vast and mysterious cosmos, the *Starry Sea Glass Vase* is crafted using crucible furnace glass with hollow-blowing and freehand-pulling techniques. This one-piece creation embodies stunning artistry, capturing an impressive allure.

The *Starry Sea Glass Vase* displays a mesmerizing interplay of blue and silver textures, enhanced by luminous powder that adds a magical dimension to its visual impact. With each glance, one can appreciate the rich layers and contrasts of light and shadow. When placed on a table, it resembles an exquisite, irreplaceable piece of art. Beyond its aesthetic appeal, it functions as both a vase and a diffuser, making it a standout feature in home decor. It invites us to momentarily set aside our busy lives and immerse ourselves in its rare tranquility and beauty.

商品規格

材質 / 玻璃

Glass

尺寸 / 12 x 6 x 13 cm

參考售價 / NTD 980 / 件







溪泉\_ 藺編提籃 Si Cyuan\_ Rush Grass Basket

## 藺草編織的傳承與生命力 乘載著日常各種樣貌

「藺編提籃」選用中部獨有的藺草手工編製而成，以「亂花」紋路為基底，鏤空且帶有扎實立體感的衝擊；大小兩種尺寸，無論是日常使用或是特別場合，都能展現別出心裁的美感與實用性。

The *Rush Grass Basket* is crafted from the unique rush grass found in central Taiwan. Its base features a "chaotic flower" pattern, emphasizing a hollow yet sturdy three-dimensional effect. Available in two sizes, this basket beautifully combines artistry with practicality, making it perfect for both everyday use and special occasions.

溪泉 Si Cyuan

Email / sicyuanquo@gmail.com

地址 / 臺中市西區民生路 368 巷 4 弄 12 號 1 樓

1F., No. 12, Aly. 4, Ln. 368, Minsheng Rd., West Dist., Taichung City, Taiwan (R.O.C.)



藺草編織技術在臺灣已經流傳了三百多年，日治時期藺製品佔臺灣特產出口的第三位，僅次於糖和米。對於大甲人而言，藺草不只是家家戶戶經濟的來源，也是許多人兒時記憶的連結。來自臺中大甲的天然草手工編織品牌「溪泉 Si Cyuan」，由第三代承襲編織的故事，用創意展現藺草的生命力，並以不同姿態呈現於各種生活物件中。

選用中部獨有的藺草，運用百年傳承的手工編織技術製成的「藺編提籃」，以壓花紋路「亂花」為基底，花紋鏤空的包身與帶有藺草立體感的紋路，規律地相接交錯；內裡使用厚磅數的棉布增加籃子的耐用性，圓柱形提把也做了承重的加強，強韌又溫柔的承載日常生活的各種樣貌。

「藺編提籃」大小兩種尺寸，可以滿足生活中不同器物的承裝，適合外出採購、野餐露營、居家布置或是個人配件，無論是日常使用或是特別場合，都能展現別出心裁的美感與實用性。透過編織技術的推廣，藺草的文化內涵將深植於每個人心中。

The art of rush grass weaving has been practiced in Taiwan for over 300 years. During the Japanese colonial period, rush products ranked as Taiwan's third largest export, following only sugar and rice. For the people of Dajia, rush grass signifies not only an economic source for every household but also a cherished link to childhood memories. *Si Cyuan*, a natural grass weaving brand from Dajia, Taichung, carries this legacy into its third generation, infusing creativity to bring rush grass to life in various everyday objects.

The *Rush Grass Basket* is crafted using a century-old hand-weaving technique, featuring a base adorned with a pressed floral pattern known as "chaotic flowers." The intricate, hollow design of the basket's body intertwines with the three-dimensional quality of rush grass to create a harmonious pattern. Its interior is lined with thick cotton fabric for added durability, and the cylindrical handles are reinforced for strength. Sturdy yet gentle, this basket is ideal for carrying a range of items in daily life. Whether for everyday use or special occasions, the *Rush Grass Basket* beautifully merges artistry with practicality.

### 商品規格

材質 / 藺草

Rush grass

尺寸與參考售價 /

大提籃 (Big size)

包身:  $\varnothing 20 \times H24 \text{ cm} \pm 10\%$

提把垂直高度 (含包身):  $32 \text{ cm} \pm 10\%$  參考售價: NTD 3,800 / 件

小提籃 (Small size)

包身  $\varnothing 20 \times H14 \text{ cm} \pm 10\%$

提把垂直高度 (含包身):  $26 \text{ cm} \pm 10\%$  參考售價: NTD 3,400 / 件







C.C.C. Glass Works\_百岳清酒杯 C.C.C. Glass Works\_ Baiyue Sake Cup

## 四季之景與玻璃工藝結合 融入品味生活的百岳清酒杯

「百岳清酒杯」創作靈感，源自於臺灣四季變化所帶來的獨特風情。將春日的山花、夏日的霧嵐、秋天的落葉與冬日的白雪都變為設計媒材，利用四季之景，將精湛的玻璃工藝轉化為一杯清酒的色彩表徵。

The *Baiyue Sake Cup* is inspired by the unique charm of Taiwan's changing seasons. The spring flowers, summer mists, autumn leaves, and winter snow each serve as design elements, using the beauty of the seasons to transform exquisite glass craftsmanship into a colorful representation within the sake cup.

C.C.C. Glass Works

Email / abc831690@gmail.com



春日的山花、夏日的霧嵐、秋天的落葉與冬日的白雪，全被收攏進「百岳清酒杯」。設計師將對於手工藝的熱愛，融入台灣風土與人文環境，轉變為對於作品的想像，表達事物之間的雙面關係，探討尋常與反常之間的界限。

「百岳清酒杯」創作靈感源自於臺灣四季變化所帶來的獨特風情。春日裡，顏色鮮豔的山花綻放；夏日過後，雨水滋潤了大地，霧嵐飄渺；秋天則是落葉漫天，呈現一片金黃；冬日白雪皚皚的寂靜景致，展現寧靜而純粹的一刻。四季之景，透過精湛的玻璃工藝轉化為一杯清酒的色彩表徵。

來自玻璃工藝重鎮-新竹的「C.C.C. Glass Works」將對於玻璃工藝的探索與創新，透過清酒杯引領我們走進藝術與文化相結合的生活空間。在每一次舉杯共飲之際，感受蘊藏清透玻璃中的色彩光影變幻與無限想像，也細細品味來自臺灣山岳之美的讚嘆，和設計師細膩又深刻的詮釋。

### 商品規格

材質 / 玻璃  
Glass

尺寸 / 7 X 7 X 5 cm

顏色 / 粉色、綠色、黃色

參考售價 / NTD 1,250 / 件



Spring mountain flowers, summer mists, autumn leaves, and winter snow—all are captured within the *Baiyue Sake Cup*. The designer's love for craftsmanship merges with Taiwan's landscapes and cultural essence, transforming these inspirations into the vision behind each piece. This creation reflects the dual nature of things, exploring the boundary between the ordinary and the extraordinary.

The *Baiyue Sake Cup* draws inspiration from the unique charm of Taiwan's changing seasons. Through exquisite glass craftsmanship, seasonal colors are transformed into a visual representation within the cup. This sake cup invites us into a space where art and culture meet. With each toast, we can appreciate the shifting hues and shadows in the transparent glass, savoring both the beauty of Taiwan's mountainous landscapes and the designer's delicate, profound interpretation.







喜樹之器\_ 槿枝茶針匙 SHISU Craft\_ SHISU Tea Pick

## 傳遞祝福與喜慶的喜樹之器 承載著在地文化與歷史背景

「槿枝茶針匙」運用黃槿樹作為靈感，將樹枝透過實物鑄造技術轉化為黃銅材質，並結合茶針匙的結構，成為實用且富有質感的茶道具。茶匙系列經過手工處理，以敲花工藝製作葉片點綴於枝幹上，隨著時間會展現出獨特的韻味。

The *SHISU Tea Pick* draws inspiration from the hibiscus tree, using a casting technique to transform branches into brass. By combining the structure of a tea needle spoon, it becomes a practical yet sophisticated tea accessory. The tea spoon series is handcrafted, with leaf shapes created through hammering techniques and adorned on the branches. Over time, these pieces develop a unique charm and character.

喜樹之器 SHISU Craft

Email / ihsuan76@hotmail.com

地址 / 臺南市南區喜樹路 222 巷 29 弄 24 號

No. 24, Aly. 29, Ln. 222, Xishu Rd., South Dist., Tainan City, Taiwan (R.O.C.)



百年多以前，「喜樹」所在之處被澎湃的海洋和翠綠的菜園環抱，傳說村民們用沿海常見的黃槿葉盛裝糕點來慶祝喜事，因此黃槿樹被譽為「喜慶之樹」，充滿溫暖與祝福的「喜樹之器」便以此為名，延續了歷史與地方文化的意義。

以在地自然元素為靈感，蘊含職人的匠心工藝，「槿枝茶針匙」運用黃槿樹的植物意象作為發想，將樹枝透過實物鑄造技術轉化為黃銅材質，並結合茶針匙的結構，成為實用且富有藝術感的茶道具。茶匙系列經過手工處理，以敲花工藝製作葉片點綴於枝幹上，隨著時序的推移變化，黃銅表面會展現出獨特的韻味。

槿枝茶針匙有簡約槿枝款、帶上黃槿葉的款式可隨不同茶席擺設選擇，茶席之間不光是聞香喝茶，更透過茶道具的細節，帶來內在心靈的梳理。在普通或是忙碌的日子裡，做一杯講究而細膩的好茶，為生活帶來美好獨特的情調吧！

Over a century ago, the area surrounding *SHISU Craft* was vibrant with the sea and lush vegetable gardens. According to legend, villagers used leaves from the coastal hibiscus tree to hold pastries during celebrations, leading to the tree being cherished as the "Tree of Joy." Named in honor of this tradition, the *SHISU Craft* collection carries forward the area's rich history and cultural heritage, embodying warmth and blessings.

Inspired by natural local elements and skilled artisanship, the *SHISU Tea Pick* transforms branches into brass through precise casting techniques. This design not only retains the functional structure of a tea needle spoon but also stands as a practical yet artistic tea accessory. During a tea ceremony, one can savor the tea's aroma and flavor while finding inner clarity in the intricate craftsmanship of the utensils. On busy or quiet days, brewing a beautifully crafted, delicate cup of tea adds a unique charm and sense of ritual to everyday life.

### 商品規格

材質 / 黃銅、銀

Brass and silver

尺寸 / 15 X 1 X 0.5 cm

參考售價 / 樹枝版 (Branches): NTD 1,500 / 件

葉子版 (Leaves): NTD 2,500 / 件

葉子版 (局部純銀) (Leaves-partly made of silver):  
NTD 3,980 / 件







大地\_尤加利葉羊毛圍巾-生態移印染系列 TATI\_Eucalyptus Leaf Wool Scarf - Eco-Print Transfer Dye Series

## 來自大地的禮物 植物印染帶來的獨特與奧妙

「尤加利葉羊毛圍巾」採用柔暖又溫暖的羊毛布料，以生態植物印染工藝打造，透過高溫蒸煮將花葉植物的形狀、姿態和色素轉印到纖維布料上，保留了植物的原始形狀，也可以將花葉植物進行堆疊構圖，展現變化無窮的色彩。

The *Eucalyptus Leaf Wool Scarf - Eco-Print Transfer Dye Series* is made from soft, warm wool fabric and features an eco-printing technique. Through a high-temperature steaming process, the shapes, forms, and pigments of flowers and leaves are transferred onto the fabric, preserving the original outlines of the plants. This method also allows for layering and composition, showcasing an endless variety of colors.

大地 TATI

電話 / 07-3753688、0937678922

Email / bestyeve@gmail.com

地址 / 高雄市仁武區永樂街1號

No. 1, Yongle St., Renwu Dist., Kaohsiung City, Taiwan (R.O.C.)



在插花藝術中，尤加利葉是一個優雅的配角；而在印染布料的過程中，它也是一個不可或缺的角色。「大地工作坊」巧妙地將兩者結合為「尤加利葉羊毛圍巾」，濃綠的尤加利葉，經印染後以黃橙色姿態出現，強烈的顏色對比展現草木染獨有的驚喜。

圍巾採用柔暖又溫暖的羊毛布料，以獨特性濃厚的生態植物印染工藝(Eco-Print技術)打造，結合永續精神和創意，具備環保性，也更友善環境。透過高溫蒸煮將花葉植物的形狀、姿態和色素轉印到纖維布料上，經過媒染、排列與堆疊，保留了植物的原始形狀，也可以將花葉植物進行堆疊構圖，展現變化無窮的色彩。

微涼的初秋，或是寒冷的冬日，不可缺少的圍巾成為必備的保暖單品，藉由色彩豐富的搭配與植物印染技術的奧妙，感受傳統染色工藝與現代設計間的相互融合。

### 商品規格

材質 / 羊毛  
Wool

尺寸 / 190 x 70 x 0.1 cm

參考售價 / NTD 4,500 / 件



In the art of flower arranging, eucalyptus leaves serve as an elegant supporting element; in the process of dyeing fabrics, they are also an indispensable component. TATI cleverly combines the two applications of eucalyptus leaves into the Eucalyptus Leaf Wool Scarf. The deep green eucalyptus leaves, after being dyed, emerge in a yellow-orange hue, with the striking color contrast showcasing the unique surprise of plant-based dyes.

The *Eucalyptus Leaf Wool Scarf - Eco-Print Transfer Dye Series* is crafted using a unique eco-printing technique that combines sustainability with creativity, making it environmentally friendly and gentle on the planet. Through a high-temperature steaming process, the shapes, forms, and pigments of flowers and leaves are transferred onto the fabric. This method involves mordanting, arranging, and layering, to preserve the original shapes of the plants while allowing for dynamic color variations in the design.





微一設計\_花瓶鳥 OUI design\_Bird Vase

## 俏皮與質感兼具的花瓶鳥 展現工藝拼接的立體感與創意元素

「花瓶鳥」應用台南傳統工藝「茄苳入石柳」的工法，將不同木頭鑲嵌組合，使作品展現出獨特的立體感與創意。採用不同木材拼接而成，展現鳥類的美麗輪廓和細膩質感，並根據不同的場合和心情，可為鳥兒換上不同的冠羽。

The *Bird Vase* employs the traditional Tainan craft technique known as "Jia Dong Ru Shi Liu," skillfully inlaying different types of wood to create a unique three-dimensional effect and artistic expression. This piece showcases the beautiful contours and delicate textures of a bird, featuring interchangeable crests that can be adapted according to different occasions and moods.

微一設計 OUI design

電話 / 0956-111451

Email / ouidesign51@gmail.com

地址 / 臺南市南區永成路二段 900 巷 399 號

No. 399, Ln. 900, Sec. 2, Yongcheng Rd., South Dist., Tainan City, Taiwan (R.O.C.)



將傳統工藝融入現代生活，「微一設計」專注於車枳、雕刻、榫接、鑲嵌等傳統木工技藝，結合現代設計理念，賦予古老工藝新的生命力。其中，「花瓶鳥」應用台南傳統工藝「茄苳入石柳」的工法，將不同木頭鑲嵌組合，使作品展現出獨特的立體感與創意。

以鳥類為發想靈感，在這塊多姿多彩的臺灣寶島，鳥類因為獨特的冠羽而備受矚目。因此「花瓶鳥」採用不同木材拼接而成，展現鳥身的美麗輪廓和細膩質感；其中可根據不同的場合和心情，為鳥兒換上不同的冠羽，創造出多變又活潑的造型，無論放上清新的花束還是簡單的綠色植物，都展現出不同的魅力，為家居氛圍帶來新鮮感和生命力。

另外，作品使用未經染色的天然木材，保留了木頭最原始的顏色與紋路，散發出自然的溫潤觸感，使得我們在繁忙生活當中，能夠找到一絲寧靜與愉悅。

Integrating traditional craftsmanship into modern life, *OUI Design* focuses on traditional woodworking techniques such as carving, joinery, and inlaying, while combining modern design concepts to breathe new life into ancient crafts. Among them, the *Bird Vase* utilizes the traditional Tainan craftsmanship of "Jia Dong Ru Shi Liu" (a unique wood-inlaying technique) to combine different types of wood, creating a piece that showcases a distinctive sense of three-dimensionality and creativity.

The *Bird Vase* draws its design inspiration from birds. On the vibrant and colorful island of Taiwan, the unique crests of birds make them particularly striking. This piece is crafted from various types of wood, showcasing the beautiful contours and delicate textures of a bird's form. Using untreated natural wood, it retains the original colors and grain patterns, exuding a warm, natural feel that brings a moment of tranquility and joy to our busy lives.

商品規格

材質 / 木材、紅銅、玻璃管

Wood, copper and glass tube

尺寸 / 16 x 11 x 22 cm

參考售價 / NTD 3,480 / 件







微一設計\_雲山飾品架 OUI design \_ Mountain Jewelry Stand

## 收納山峰與雲海之美 將自然融入的日常飾品架

「雲山飾品架」將山林雲海轉化為桌上的一隅風景，將多種木材的鑲嵌和組合，創造出獨特的立體感，讓每件作品都獨一無二。飾品架的山峰專門設計用來收納戒指，而雲海造型的凹槽則適合放置耳環等首飾，巧妙地結合使用情境。

The *Mountain Jewelry Stand* transforms the beauty of mountain forests and seas of clouds into a scenic corner for your table. Through the inlay and combination of various types of wood, it creates a unique three-dimensional effect, making each piece one of a kind. The peaks of the jewelry rack are specifically designed to hold rings, while the cloud-shaped grooves are perfect for placing earrings and other jewelry, cleverly combining practicality with aesthetics.

微一設計 OUI design

電話 / 0956-111451

Email / ouidesign51@gmail.com

地址 / 臺南市南區永成路二段 900 巷 399 號

No. 399, Ln. 900, Sec. 2, Yongcheng Rd., South Dist., Tainan City, Taiwan (R.O.C.)



臺灣是一座充滿山的島嶼，擁有268座超過海拔3,000公尺的高山，成為全世界山密度最高的島嶼之一。在這片壯麗的土地上，「微一設計」以臺灣高聳堅挺的山岳和壯闊的雲海作為設計靈感，將自然之美融入日常生活，打造「雲山飾品架」。

「雲山飾品架」將山林雲海轉化為桌上的一隅風景，透過創意和幽默的設計手法，傳遞木材的溫暖與微笑；將多種木材的鑲嵌和組合，創造出獨特的立體感，讓每件作品都獨一無二。飾品架的山峰專門設計用來收納戒指，而雲海造型的凹槽則適合放置耳環等首飾，巧妙地結合使用情境。

透過在地島嶼特色，結合木作工藝技術和創意思維，讓每個人都能在平凡生活中找到不平凡的美好，是對於臺灣自然之美的一種致敬，更是對傳統工藝的一種珍視與延續。

### 商品規格

材質 / 胡桃木、楓木、橡木、桃花心木

Walnut, maple, oak and mahogany

尺寸與參考售價 / 高 (L): 9 x 9 x 27 cm 參考售價: NTD3,980 / 件

中 (M): 11 x 8 x 20 cm 參考售價: NTD3,780 / 件

低 (S): 12 x 8.5 x 18 cm 參考售價: NTD3,580 / 件



Taiwan is an island filled with mountains, boasting 268 peaks over 3,000 meters in elevation, making it one of the most mountain-dense islands in the world. On this magnificent land, *OUI Design* draws inspiration from Taiwan's towering mountains and vast seas of clouds, infusing the beauty of nature into everyday life with the creation of the *Mountain Jewelry Stand*.

Through creative and humorous design techniques, this piece cleverly combines various types of wood to create a unique three-dimensional effect, making each item one of a kind. By incorporating local island characteristics, woodworking craftsmanship, and innovative thinking, it enables everyone to discover extraordinary beauty in their ordinary lives.





自然色\_花語團扇 NATURAL COLOR WORKS\_ Floral Hand Fan

## 藍染藝術的團扇之作 賦予詩意與納涼意象

「花語團扇」扇面採用藍染棉布，雙面外觀呈現獨特而精美的樣貌；骨架以竹子為主體，天然的材質讓手握觸感更加溫潤，兼具搨風及納涼的實用意象。可搭配竹製檯座將作品固定其中，放置於家中一隅當作擺設。

The *Floral Hand Fan* features a fan surface made of indigo-dyed cotton fabric, showcasing a unique and exquisite appearance on both sides. Its frame is primarily made of bamboo, providing a warm and natural feel when held while also offering practical use for fanning and cooling. Paired with a bamboo stand, this piece can be securely displayed in a corner of your home as a decorative item.

自然色 NATURAL COLOR WORKS

電話 / 049-2334141#632、0975-239767

Email / natural.color.works@gmail.com、ching.szu11@gmail.com

地址 / 南投縣草屯鎮中正路 573 號

No. 573, Zhongzheng Rd., Caotun Township, Nantou County 542, Taiwan (R.O.C.)



在傳統工藝中，團扇以優雅的弧形和精緻的扇骨，形成一種古典優雅的東方韻味。致力於推廣臺灣藍染技術的「自然色」，將傳統團扇意象結合藍染技術，創作出「花語團扇」。

「花語團扇」與一般傳統團扇的不同之處，在於以藍染棉布作為扇面，取代了紙材的使用，整體更加耐用和堅固。經過多道工序的手工製作，扇面採用手工染色技法進行型染和紮染，雙面外觀呈現獨特而精美的樣貌；或深或淺的藍靛染色，讓每一件團扇作品都顯得獨一無二而珍貴。骨架保留了原始竹節，天然的材質讓手握觸感更加溫潤，兼具搨風及納涼的實用意象。

將使用功能列入考量，可搭配竹製台座將「花語團扇」固定其中，在沒有使用的時候放置於家中一隅，變成一件沉靜優雅的藝術觀賞作品。搨風之間，也能欣賞多層次的藍染工藝帶來的視覺趣味，彷彿將美好畫面都停格在腦海中，感受傳統工藝與藍染設計相互交融的美感。

In traditional crafts, the hand fan embodies a classic Eastern charm with its graceful curves and delicate fan ribs. NATURAL COLOR WORKS, devoted to promoting Taiwanese indigo dyeing techniques, has combined the traditional hand fan imagery with indigo dyeing to create the Floral Hand Fan.

The *Floral Hand Fan* differs from traditional round fans in that its fan surface is made of indigo-dyed cotton fabric instead of paper, making it more durable and sturdy. The fabric features hand-dyeing techniques such as pattern dyeing and tie-dyeing, resulting in a unique and exquisite appearance on both sides. The varying shades of indigo dye give each fan a distinctive and precious quality. Additionally, the fan ribs retain their original bamboo joint design, combining practicality with aesthetics for fanning and cooling.

### 商品規格

材質 / 天然染色、天然藍靛、竹扇骨、棉布

Natural indigo, bamboo fan ribs, cotton fabric

尺寸 / 團扇: 32.5 x 24.5 x 0.5 cm、芭蕉扇: 34.5 x 24.5 x 0.5 cm

參考售價 / NTD 550 / 件、NTD 650 / 件(含禮盒 With a gift box)







OakCherry\_鑲花工藝托盤-金魚 OakCherry\_Marquetry Tea Tray - GoldFish

## 設計與新意融合 感受鑲花木藝的精湛之處

「鑲花工藝托盤-金魚」運用木材削以薄片，將木片依照設計圖稿進行組裝拼貼，相思木特殊紋路形成水面粼粼的效果，而色彩鮮艷的臺灣杉則表現金魚頭部和鰭部；透過不同木皮的紋理相互烘托交織，讓整體畫面顯得更加生動活潑。

The *Marquetry Tea Tray - GoldFish* is meticulously assembled and collaged with thin wood slices following precise design blueprints. The distinctive grain of acacia wood creates a shimmering effect that mimics water's surface, while the vivid hues of Taiwanese cedar bring the goldfish's head and fins to life. Interwoven textures from various wood veneers blend seamlessly, enhancing the tray's lively and dynamic design.

### OakCherry

Email / oakcherrytw@gmail.com

地址 / 屏東縣新園鄉興隆村臥龍路 495-72 號

No. 495-72, Wolong Rd., Xinyuan Township, Pingtung County, Taiwan (R.O.C.)



近距離觀賞看似寫意，實際上卻也是講究，「OakCherry」以鑲花工藝技法賦予了每件作品獨特的視覺效果。將木皮巧妙應用於商品設計中，透過臺灣風景、動物和植物為主題，展現豐富多彩的木色紋理，讓每一件木質器物都成為生活中的藝術品。

其中「鑲花工藝托盤-金魚」運用木材削以薄片，如同拼圖般將木片依照設計圖稿進行組裝拼貼，相思木特殊紋路形成水面粼粼的效果，而色彩鮮艷的臺灣杉則表現金魚頭部和鰭部；透過不同木皮的紋理相互烘托交織，讓整體畫面顯得更加生動活潑。

讓精緻工藝進入生活日常，「鑲花工藝托盤-金魚」保留原汁原味的自然元素，放置於居家空間，自然形成一端風景，用來盛放茶點，兼具實用性和美觀，期望在日常生活中感受到工藝帶來的溫暖。

OakCherry focuses on the art of close-up appreciation, incorporating marquetry techniques into each piece to create a distinctive visual effect. The brand skillfully applies wood veneers to product design, drawing inspiration from Taiwan's landscapes, animals, and plants. This approach highlights the rich and varied wood grain patterns, transforming every wooden item into an everyday work of art.

The *Marquetry Tea Tray - GoldFish* is assembled and collaged with thin wood slices following a carefully planned design. The unique grain of acacia wood creates a shimmering effect reminiscent of water, while the vibrant hues of Taiwanese cedar vividly capture the goldfish's head and fins. Interwoven textures from different wood veneers bring the overall design to life. This tray retains its natural elements and can be used at home to serve snacks or tea, blending practicality with artistry and bringing the warmth of craftsmanship into daily life.



### 商品規格

材質 / 木皮飾面：臺灣相思木、台灣杉、北美楓木；底材：合板  
Taiwan acacia, Taiwan cedar, north American maple and plywood

尺寸 / 25 x 33 x 4 cm

參考售價 / NTD 5,600 / 件





天染工坊\_遊藝雅集~天染亞麻紳士帽 Tennii\_Natural Dyed Linen Gentleman's Hat

## 以乘載天然柔和色彩的帽子 讓生活中的優雅與舒適隨心而現

「遊藝雅集~天染亞麻紳士帽」在造形與款式的設計上跳脫市場的流行，注重臺灣的氣候與風土民情，考量帽形、材質、染色工藝與使用的方便性，讓佩戴者散發文質彬彬的優雅氣質。

The *Natural Dyed Linen Gentleman's Hat* breaks through current market trends in its shape and style design, paying close attention to Taiwan's climate and cultural context. It emphasizes form, materials, dyeing techniques, and ease of use, allowing wearers to exude an elegant and refined demeanor.

天染工坊 *Tennii*

電話 / 049-2350607、049-2392028、04-24833393

Email / taiwan.tennii@msa.hinet.net

地址 / 南投市環山路 51 號

No. 51, Huanshan Rd., Nantou City, Nantou County, Taiwan (R.O.C.)



「Tennii天染工坊」由陳景林與馬毓秀共同創立，專注於以研究推動教學、產品設計、推廣友善大地的天然染織工藝。三十多年來，工坊積極探索纖維材質、天然染料及染織技藝，逐步構建染織工藝品的生產機制，推動染織工藝的持續發展。

「遊藝雅集~天染亞麻紳士帽」融合了傳統與現代設計，跳脫市場流行，專注於臺灣的氣候與風土民情，在造形、材質、染色工藝上均經過精心考量，旨在兼顧美觀與實用性。每一頂帽子都承載著天然染料的獨特韻味，讓佩戴者不僅能享受到舒適，更能感受到手工藝的細膩與美學。

身穿輕鬆的休閒裝，佩戴著「遊藝雅集~天染亞麻紳士帽」，漫步於臺灣的農田或海岸邊。帽子的柔和色調與自然環境相映成趣，增添了一份舒適優雅的氛圍。無論是在戶外野餐、海邊散步，或是參加朋友聚會，這款帽子都能讓你在享受生活的同時，散發出文質彬彬的獨特氣質。

*Tennii*, founded by Jing-Lin Chen and Yu-Hsiu Ma, is dedicated to promoting earth-friendly natural dyeing and weaving techniques through research-driven teaching and product design. For over thirty years, the workshop has actively explored fiber materials, natural dyes, and dyeing techniques, gradually building a production system for textile crafts and fostering the sustainable development of dyeing and weaving arts.

The *Natural Dyed Linen Gentleman's Hat* seamlessly blends traditional craftsmanship with modern design, with special attention to its shape, materials, and dyeing techniques to achieve a balance of aesthetics and practicality. Each hat reflects the unique charm of natural dyes, allowing wearers to experience both comfort and the delicate artistry of handcrafted work. The hat's soft, natural tones harmonize beautifully with the environment, adding a touch of elegance and ease to any setting.

### 商品規格

材質 / 亞麻、棉

Linen and cotton

尺寸 / 28.5 X 25.5 X 15cm，帽圍58cm，內無伸縮，

單一尺寸

款式 / 灰藍雲紋、柿刷紋

參考售價 / NTD 2,280 / 件







品花學\_春花四喜杯墊 Hinka\_Twined Flowers Coaster

## 以栩栩如生的纏花杯墊 讓花的靈感，綻放於生活每一刻

「春花四喜杯墊」以看花片作為靈感，將纏花平面化，結合水泥底座成為杯墊。考量實用性，以耐水的合成紙取代紙片，並選用拉成鎖鏈狀的文化線作為線材增加耐磨度，讓傳統纏花工藝延伸出新的日常使用可能。

The *Twined Flowers Coaster* is inspired by traditional flower-viewing pieces, reimagining the flower-twining technique in a flat design and incorporating a cement base to create a functional coaster. To enhance practicality, the paper has been replaced with water-resistant synthetic paper, while chain-like cultural thread was chosen for increased durability. This innovation brings new possibilities to the traditional flower-twining craft, integrating it seamlessly into everyday life.

品花學 Hinka

Email / hinkastudio@gmail.com



「Hinka 品花學」致力於捕捉那些瞬息萬變的花之美，以作品構建了一個花的世界觀，帶領大家藉由作品賞花、玩花、作花，讓花的美麗融入日常生活；「春花四喜杯墊」便是一款以此為設計理念，融合傳統工藝與現代設計的獨特產品。

「春花四喜杯墊」所運用的「纏花」技藝是以紙板、鐵絲和絲線製作的傳統工藝，纏出的花朵不僅是新娘出嫁時的象徵，也蘊含了家族的祝福與寄託，與生活習俗密切相關，反映人們對美好生活的追求；工藝師以客家新娘精心繡成的「看花」圓形繡片為靈感，將纏花技術平面化，結合耐水的合成紙和堅固的水泥底座，創造出既美觀又實用、適合現代家居風格的「春花四喜杯墊」。

在陽光明媚的午后，手捧一杯甘醇茶或香濃咖啡，「春花四喜杯墊」靜靜承載著杯子，鮮花紋理與水泥質感相得益彰，為這一刻增添自然韻味。無論在家中、辦公室或聚會時，這款杯墊都是吸引眼球的焦點，讓生活空間散發花的美麗與活力。

### 商品規格

材質 / 纏花、水泥

Twined flowers, cement

尺寸 / 10 x 10 x 1 cm

款式 / 桐花白、朝顏藍、蓮花粉、太陽橘

參考售價 / NTD 520 / 件



*Hinka* is dedicated to capturing the fleeting beauty of flowers, creating a distinctive floral worldview through its work. By guiding people to appreciate, arrange, and craft with flowers, *Hinka* encourages the integration of floral beauty into everyday life. The *Twined Flowers Coaster* embodies this design philosophy, merging traditional craftsmanship with modern design to create a truly unique product.

The *Twined Flowers Coaster* utilizes the traditional flower-twining technique and is crafted from cardboard, wire, and silk thread. The flowers created through this process symbolize not only the joy of a bride on her wedding day but also the blessings and hopes of her family. Drawing inspiration from the circular "flower-viewing" embroidery meticulously crafted by Hakka brides, the artisan reimagines the flower-twining technique in a flat form. With water-resistant synthetic paper and a sturdy cement base, the *Twined Flowers Coaster* beautifully complements modern home decor styles.







原纖本色\_構樹樹皮杯墊 Original Fiber Primary Color\_ Paper Mulberry Bark Coaster

## 從土地到桌面 將構樹樹皮化為獨一無二的浪漫詩篇

「原纖本色-構樹樹皮杯墊」表面木質網格紋理來自天然構樹樹皮，表層塗佈以蜂蠟，杯墊本體上緣與外側，塗以臺灣大地原色天然色料，展現自然的律動感。

The surface of the *Paper Mulberry Bark Coaster* features a wooden grid texture derived from natural paper mulberry bark, protected by a layer of beeswax. The upper edge and outer side of the coaster are coated with natural dyes from Taiwan's land, showcasing a beautiful sense of organic rhythm.

### 原纖本色 Original Fiber Primary Color

電話 / 0952-234146、0918-903439

Email / my852953@gmail.com

地址 / 南投縣草屯鎮御史里美村巷 52 弄 23 號 1 樓

1F., No. 23, Aly. 52, Meicun Ln., Caotun Township, Nantou County, Taiwan (R.O.C.)

南投縣草屯鎮御史里玉屏路 179-16 號

No. 179-16, Yuping Rd., Caotun Township, Nantou County, Taiwan (R.O.C.)



「原纖本色」致力於使用臺灣自然資源，如土壤、植物、礦物等製作顏料，研究並重拾古人作畫的完整程序，找回就地取材的智慧；不只以繪畫為核心，也擅長使用構樹樹皮製作工藝品。

構樹樹皮因纖維豐盈且柔韌，早期是宣紙、棉紙及鈔票的用紙來源之一，可孕育出高品質的手工紙。這種可再生的素材，亦可與天然染料交織，譜寫出色彩斑斕的視覺樂章；構樹樹皮經敲打鬆開纖維，讓樹皮向外延展，並均勻敲至平整後即成為「原纖本色-構樹樹皮杯墊」的製作材料，每片構樹樹皮布上木質網格紋理為每個杯墊賦予自然的律動感。

作品使用口香糖基膠與孟宗竹層壓，確保了結構的穩固；表層的蜂蠟塗佈增強防水性能，讓日常使用無憂。而杯墊的上緣則以臺灣土地的天然色料裝飾，捕捉了土地的氣息，為每個用餐時刻帶來溫暖；無論熱咖啡或清涼飲品，這款杯墊都能守護您的桌面，展現生活中的自然詩意。

The *Original Fiber Primary Color* is dedicated to using Taiwan's natural resources, such as pigments made from the soil, plants, and minerals. The brand studies and revives the complete process of ancient painting techniques, rediscovering the wisdom of getting locally produced raw materials. In addition to focusing on painting, the brand also excels in crafting items from the bark of paper mulberry trees.

The bark of the paper mulberry tree is rich in fibers and flexible, making it an ideal source for producing high-quality handmade paper, historically used for xuan paper, cotton paper, and banknotes. The bark is pounded to loosen and extend the fibers, then evenly flattened to create the material for the *Paper Mulberry Bark Coaster*. The naturally formed wooden grid texture on each piece of bark adds a sense of organic rhythm to every coaster. The upper edge of the coaster is adorned with natural dyes sourced from Taiwan's land, bringing a warm atmosphere to each dining experience.

### 商品規格

材質 / 構樹樹皮布、孟宗竹積層材、蜂蠟

The bark of paper mulberry trees, Meng Zong bamboo laminated panel, beeswax

尺寸 / 8.8 X 8.8 X 1 cm

參考售價 / NTD 720 / 件







RIVER WE\_露法椅 RIVER WE\_ Luffa Chair

## 風乾絲瓜融入家具 讓空間充滿自然慢活的氣息

作品以「露法」為名，全張木椅以傳統榫接技法製作，採手工車削打造椅腳造型，並以天然風乾的絲瓜作為整件作品的核心，富彈韌性與透氣性的風乾絲瓜布運用在傢俱上，顛覆想像，展現椅子舒適溫柔且創新的一面。

This piece is named *Luffa* and is a solid wood chair crafted using traditional mortise and tenon techniques, with the legs shaped by hand-turning. The core material is naturally dried luffa, which is both elastic and breathable. Incorporating this material into furniture design challenges conventional perceptions of traditional chairs, showcasing a comfortable, gentle, and innovative aspect.

### RIVER WE

電話 / 0925-161330、03-8225668

Email / ddohnbskr@yahoo.com.tw, ddohnbskr@gmail.com

地址 / 花蓮市中美路 275-12 號

No. 275-12, Zhongmei Rd., Hualien City, Hualien County, Taiwan (R.O.C.)



誕生於花蓮的「RIVER WE」，儘管過程繁瑣且耗時，為了讓每一件作品愈發趨近藝術品，始終堅持純手工製造家具，以展現花蓮生活的獨特韻味。在滿足客戶需求的同時，RIVER WE 更以創新為動力，「露法椅」便是這種創新的體現，顛覆大眾對絲瓜布的理解與想像，運用天然風乾的絲瓜，將其完美融入家具設計中。

以「露法」為名，這款椅子的主體材質選用臺灣檜木與非洲柚木，椅腳造型由手工車削而成，並結合先人的智慧，以風乾絲瓜布的特性替代化學泡綿與塑料；絲瓜風乾後的網狀纖維，既富有彈韌性與透氣性，為傢俱坐墊的理想緩衝材料，透過絲瓜的獨特紋理，展現了家具創新的新面貌，並減少對環境的衝擊與損害。

花蓮依山傍水、包容萬物，這片自然之美賦予「RIVER WE」的傢俱溫柔、細膩與真誠質感；坐上椅子、閉上眼睛，感受來自花蓮慢活的生活溫度，「露法椅」的創新設計與花蓮的自然氛圍交織，讓每個生活空間都更加溫暖而美麗。

### 商品規格

材質 / 回收台灣檜木、柚木、乾燥絲瓜布  
Recycled Taiwanese cypress wood, teak wood and dried luffa

尺寸 / 65 x 38 x 45 cm

參考售價 / NTD 28,800 / 件



Born in Hualien, *RIVER WE* embraces a meticulous and time-intensive process to elevate each piece to the level of art. Dedicated to pure handcrafting, they create furniture that reflects the unique charm of Hualien life. While meeting customer needs, *RIVER WE* is also driven by innovation, exemplified in their *Luffa Chair* redefines public perception of loofah by skillfully integrating naturally dried loofah into the furniture design.

The *Luffa Chair* is primarily made from Taiwanese cypress and African teak, with the legs handcrafted using turning techniques. Its design incorporates ancestral wisdom by replacing traditional chemical foam and plastic with dried luffa fibers. The dried, net-like fibers of the luffa provide excellent elasticity and breathability, making them an ideal cushioning material for the seat. The unique texture of the luffa on the chair surface not only showcases innovative furniture design but also significantly reduces environmental impact.





赤軍寶飾\_童言童語-鹿境茶匙 CHYHJIUN\_Deer Realm Teaspoon

## 幸福鹿境，一鹿相隨 為品茶時光增添儀式感

「童言童語-鹿境茶匙」將工藝與祝福完美結合，以925回收銀材質打造，做工細緻富有層次感，茶匙柄上精雕細琢的小鹿代表祝福與陪伴，期許未來的一路上都有幸運與運氣，每一次的使用也都是儀式感生活的開始。

The *Deer Realm Teaspoon* perfectly combines craftsmanship and blessings, crafted from recycled sterling silver with intricate detailing and rich layers. The finely carved deer on the handle symbolizes blessings and companionship, suggesting a future filled with luck and good fortune. Each use of this teaspoon marks the beginning of a life experience imbued with a sense of ritual.

赤軍寶飾 CHYHJIUN

電話 / 04-22115925

Email / mmm@925.com.tw

地址 / 臺中市東區自由路三段 69 號

No. 69, Sec. 3, Ziyou Rd., East Dist., Taichung City, Taiwan (R.O.C.)



創立於1995年，「赤軍寶飾」初期銷售各國流行銀飾，現今則逐漸轉型，投入開發設計，朝品牌精緻化之路邁進。為追求精緻與品質的完美結合，設立專屬金工部門，並聘請專業珠寶師，透過珠寶工藝手法重新詮釋銀飾之美，用MIT (Made in Taiwan) 與DIT (Design in Taiwan)，推廣臺灣原創珠寶設計。

「童言童語-鹿境茶匙」響應綠色循環經濟，以925回收銀材質打造，將門市回收的銀材質重新熔煉，進行二次加工與鑄造，做工細緻、富有層次感，營造出獨特風采，茶匙柄上精雕細琢的小鹿造型的設計，具機能防滑落的實用性，也有「幸福鹿境，一鹿相隨」的寓意，象徵含著銀湯匙誕生的寶貝，能夠生活幸福、富貴平安。

代表祝福與陪伴的小鹿，為使用者在未來的一路上帶來幸運與運氣，將工藝與祝福完美結合，傳遞誠摯的期許，也妝點日常的茶飲時光，從精緻生活用具，品味儀式感生活。

CHYHJIUN was founded in 1995; in its early stage, the brand focused on selling popular silver jewelry from various countries. Today, CHYHJIUN has gradually transformed and shifted towards product development and design, moving toward a path of brand refinement. In pursuit of the perfect combination of sophistication and quality, the brand established a dedicated metalworking department and hired professional jewelers. Through expert jewelry craftsmanship, it reinterprets the beauty of silver jewelry, promoting Taiwan's original jewelry designs with MIT (Made in Taiwan) and DIT (Design in Taiwan).

The *Deer Realm Teaspoon* is crafted from recycled sterling silver and responds to the green circular economy. The recycled sterling silver undergoes melting, secondary processing, and casting, resulting in a finely detailed production process that showcases rich layers and a unique charm. The handle of the teaspoon features an intricately carved deer design, which not only serves a practical function by preventing slipping but also symbolizes a "happy deer realm, always accompanied by deer." This represents the idea that a baby born with a silver spoon will enjoy a life filled with happiness, wealth, and peace.

商品規格

材質 / 925 回收銀

Recycled sterling silver

尺寸 / 10 x 3 x 1 cm

參考售價 / NTD 3,680 / 件







派克木餘\_木職細刀 PECKMUYU\_ Wooden Utility Knife

## 木材餘料的新生，連結自然與文化 兼具觸覺、視覺與嗅覺體驗的好物

「木職細刀」以國產優良木材的餘料製作，握柄經手工精細打磨，符合人體工學設計，讓使用者無論左手或右手，都能享受到舒適的手感，並附上鉛筆，手削鉛筆享受木材香氣圍繞的自我時光，更以筆盒作為包裝，讓永續與設計共生。

The *Wooden Utility Knife* is crafted from high-quality domestic wood scraps, with the handle meticulously hand-sanded to achieve an ergonomic design, ensuring a comfortable grip for both left-handed and right-handed users. The product comes with a pencil, allowing users to enjoy the aroma of the wood while sharpening it by hand, creating a personal moment of relaxation. The packaging features a pencil case design, perfectly combining sustainability with aesthetics.

派克木餘 PECKMUYU

電話 / 0916-180292

Email / original.at95@gmail.com、wanjinmin@gmail.com

地址 / 高雄市鳳山區黃埔新村東三巷 95 號

No. 95, E. 3rd Ln., Huangpu New Vil., Fengshan Dist., Kaohsiung City, Taiwan (R.O.C.)



源自對自然與文化的深切關懷，因緣際會在修繕老屋的過程中，目睹大量木材餘料被廢棄，引發了「派克木餘」對木材再利用的思考與行動，派克木餘選擇將這些木餘料，轉化為富有美感與實用價值的生活用品，以實現臺灣林業與文化的連結，並將永續概念帶入生活。

「木職細刀」使用不同種類的國產優良木材，像是以得天獨厚香氣著稱、木紋自然平滑的臺灣扁柏及全球唯一以臺灣為屬名的植物-臺灣杉，其木質紋理多變而絢麗，擁有特殊木節及微微的香氣，讓視覺與嗅覺都能感受森林的氣息。從包裝也能看到品牌的永續設計思維，外盒由薄木料精製而成，除了保護商品，還可作為筆盒使用，而產品主體-美工刀的握柄經手工精細打磨，符合人體工學設計，讓使用者無論左手或右手，都能享受到舒適的手感。

除了美工刀之外還特別附上鉛筆，讓使用者可以手削鉛筆享受自我時光，在木材的天然香氣下回憶童年。「木職細刀」是實用工具，也是文化與自然的連結，將木工藝品融入日常生活，感受木材的自然韻味與溫暖。

Born from a deep concern for nature and culture, the idea of PECKMUYU arose by chance during the process of renovating old houses, when a large amount of wood scraps was discarded. This sparked a reflection on and action toward the reuse of wood materials. PECKMUYU chooses to transform these leftover woods into aesthetically pleasing and practical everyday items, aiming to connect Taiwan's forestry and culture while bringing the concept of sustainability into daily life.

The *Wooden Utility Knife* is made from various types of high-quality domestic wood, showcasing a diverse and vibrant grain pattern, along with unique knots and a subtle fragrance that allows users to experience the essence of the forest through sight and smell. The packaging reflects the brand's sustainable design philosophy, crafted from thin wood that not only protects the product but can also be used as a pencil case. In addition to the utility knife, the packaging includes a pencil, allowing users to sharpen it by hand and enjoy a leisurely moment of their own.

### 商品規格

材質 / 臺灣扁柏(黃檜)款: 不鏽鋼刀片、刀(臺灣扁柏)、盒(臺灣杉)  
臺灣杉(亞杉)款: 盒與刀均為臺灣杉、不鏽鋼刀片  
Taiwan cypress, Taiwania, stainless blade  
尺寸 / 盒: 21 x 7 x 3.5 cm、刀: 13 x 2.2 x 1 cm  
款式 / 臺灣扁柏(黃檜)、臺灣杉(亞杉)  
參考售價 / NTD 1,200 / 組(木盒\*1、刀\*1、鉛筆\*3)







季節角落自然染\_B&C多用休閒提包組 (Blue&Coffee) Seasons Corner\_B&C Casual Totebag Set

## 以天然染料彩布妝點再生咖啡麻袋 染出心靈的色彩，攜帶季節的故事

「B&C多用休閒提包組」包含一個托特包和一個可拆卸的零錢包，結合雲林古坑在地咖啡產業，使用咖啡豆麻袋布和以天然染料如咖啡樹枝葉與藍靛等手染彩布製成，兼具實用性、永續性與美感。

The *Blue&Coffee Casual Totebag Set* includes a tote bag and a detachable coin purse, integrating the local coffee industry of Gukeng, Yunlin. It is made from coffee bean burlap and colorful fabric dyed with natural dyes from coffee tree branches and leaves, as well as indigo. This design emphasizes practicality, sustainability, and aesthetic appeal.

### 季節角落自然染 Seasons Corner

電話 / 0922-329118、05-5823063

Email / sakuraleanne@yahoo.com.tw、sakuraleanne@gmail.com

地址 / 雲林縣古坑鄉水碓村水碓 88 號

No. 88, Shuidui, Gukeng Township, Yunlin County, Taiwan (R.O.C.)



「季節角落自然染」是一個結合工藝與公益的品牌，於2016年正式成立，創辦人-鄭麗櫻以母親的角度出發，除了專注於自然染色工藝的精進與產品設計，也致力於為特殊需求者創造一個友善、包容的療育陪伴工作環境，將染色工藝與社會責任相結合，希望以工藝之美為社會注入更多的包容與愛。

「B&C多用休閒提包組」包含一個的托特包和一個可拆卸的零錢包，雲林古坑以咖啡產業聞名，工藝師發揮創意使用咖啡豆麻袋布，結合天然染料如木藍藍靛與咖啡樹枝葉染色的彩布，打造出獨具風格的配色與質感，而包包上帶有的文字符號則是無與倫比的邂逅，期望透過此提包組記錄染布的手工溫度與咖啡麻袋布的時光記憶。

這款設計以多功能性和實用性為主軸，能夠靈活應對現代生活需求，堅韌耐用的咖啡麻袋布與精美手染布的巧妙結合，展示了自然麻布色調、傳統藍靛與現代咖啡紅的多元色彩，兼具環保與美學價值。

### 商品規格

材質 / 棉布、五金材料、咖啡豆麻布袋  
Cotton fabric, hardware materials, coffee bean linen bags

尺寸 / 提包組: 31 x 8 x 26 cm

零錢包: 16 x 1 x 10 cm

參考售價 / NTD 2,960 / 組(托特包\*1、可拆掛勾零錢包\*1)



*Seasonal Corner* is a brand that combines craftsmanship with social good. Established in 2016, the founder, Zheng Liying, approaches her work from a mother's perspective. In addition to focusing on refining natural dyeing techniques and product design, she is dedicated to creating a supportive and inclusive work environment for individuals with special needs. By integrating dyeing craftsmanship with social responsibility, the brand aims to infuse society with more inclusivity and love through the beauty of craftsmanship.

The *Blue&Coffee Casual Totebag Set* is crafted from coffee bean burlap combined with naturally dyed fabric, creating a unique color palette and texture. The symbols on the bag represent the warmth of handcrafted fabric and the memories associated with coffee burlap. The durable coffee burlap and exquisite hand-dyed fabric come together to showcase a variety of natural linen tones, traditional indigo, and modern coffee red, perfectly blending environmental sustainability with aesthetic value.







umami\_戀戀單椅 umami\_FACET

## 靜待光的來臨，創造影的不同凡響 讓家具為空間注入更多層次與氛圍

「戀戀單椅」使用全實木製作，椅背採用片狀式實木板材拼接而成，大幅減少廢木料，清晰的稜線與柔和的弧度交錯，光線在椅背折角上產生豐富的明暗對比，為空間注入更多層次與氛圍。

The FACET is made entirely of solid wood, with the backrest constructed from laminated solid wood panels, significantly reducing waste. The interplay of clear angles and gentle curves allows light to create rich contrasts of light and shadow at the chair's edges, adding depth and a unique atmosphere to the space.

### umami

電話 / 04-35094029

Email / hi@umami.tw

地址 / 臺中市外埔區二崁路 356 巷 9 號 (umami 臺中體驗店)

umami Taichung experience store - No. 9, Ln. 356, Erkan Rd., Waipu Dist., Taichung City, Taiwan (R.O.C.)



擁有40年歷史的臺灣實木家具工廠與渴望讓國際看見臺灣的設計師聯手創立「umami」，umami本意為「鮮」，代表著一種調和且餘韻甚長的味道，對於umami來說，尋找相伴生活的家具，就像是走上味覺旅程，尋找那「對味」的旅伴。透過精心設計的實木家具與複合材家具，傳達「日常回歸日常」的理念，像是料理中的鹽與胡椒，umami家具的每一件設計，都旨在為空間添上「剛剛好」的味道，帶來不凡的居家體驗。

「戀戀單椅」的設計靈感源自義大利文藝復興時期的名畫《維納斯的誕生》，女神乘著貝殼迎暖風而來，帶來愛與美，又如臺灣近代藝術家黃土水的石雕作品《甘露水》帶著東方的柔軟、韻味與力量，融合東、西方的藝術線條，清晰的稜線與柔和的弧度交錯，展現出柔韌與堅毅並存的特質。使用全實木製作，椅背採用片狀式實木板材拼接而成，既能大幅減少廢木料的產生，又保有產品的美感與質感，五個折角的設計讓柁木的木紋展現得淋漓盡致，光線在椅背折角上產生豐富的明暗對比，為空間注入更多層次與氛圍。

讓家具成為生活中適當的調味，不需過度裝潢，好的家具選擇就能讓家變得不一樣，為生活空間帶來獨特的層次與深度。

Umami is a brand co-founded by a Taiwanese solid wood furniture factory with 40 years of history and a designer passionate about bringing Taiwanese design to the global stage. The name umami, meaning "savory," symbolizes a balance of rich, lasting flavors. For umami, finding the right furniture piece is akin to a culinary journey, searching for the perfect "match." The brand embodies the philosophy of "bringing the everyday back to the every day" through meticulously crafted solid wood and mixed-material furniture. Much like salt and pepper in cooking, each of umami's designs adds just the right "flavor" to a space, creating a distinctive and memorable home experience.

The FACET draws design inspiration from the iconic Renaissance painting The Birth of Venus, which depicts the goddess arriving on a shell, a symbol of love and beauty. It also incorporates elements from Taiwanese contemporary artist Huang Tsu-Shui's stone sculpture Sweet Dew, blending Eastern softness with strength. This chair harmoniously intertwines Eastern and Western artistic influences, presenting a striking contrast of sharp angles and gentle curves that embody both resilience and grace. FACET adds layers of unique depth to home environments, transforming living spaces into extraordinary settings.

### 商品規格

材質 / 柁木

Ashwood

尺寸 / 47 x 47 x 75 cm，坐高：45cm(可依需求客訂)

款式 / 原木色、咖哩棕、芝麻黑、岩鹽灰、甜辣紅、香椿綠

參考售價 / NTD 9,300 / 件







三禾制所\_原木-黃銅鞋拔禮盒組 San Ho Studio\_ Brass Shoe Horn

## 出門儀式感養成計畫 美感與功能性兼備的鞋拔禮盒

「原木-黃銅鞋拔」採用天然軟金屬-黃銅，穿鞋時能夠靈活應對不同的角度；握把採用鐵刀木，為抓握時帶來更溫潤的手感。胡桃木底座由實心原木無拼接製成，採用圓形插槽設計，沒有方向性，隨意插取更方便使用。

The *Brass Shoe Horn* is made from natural soft metal brass, allowing for flexible use at various angles while putting on shoes. The handle is crafted from ironwood, providing a warm and comfortable grip. The walnut wood base is made from a solid piece of wood with no joints, featuring a circular slot that eliminates the need to consider orientation, making it easy to insert and use at any time.

三禾制所 San Ho Studio

電話 / 0988-034145

Email / 3hostudio@gmail.com



致力於製作具有設計感及實用性的木器產品，「三禾制所」希望透過每一件商品帶給人們更多的溫度與獨特性，優雅地體現生活態度因運而生的「原木-黃銅鞋拔」，正是一款美感與功能性兼備的產品。

「原木-黃銅鞋拔」運用天然軟金屬-黃銅的特性，讓鞋拔在穿鞋時能夠靈活應對不同的角度，較不容易斷裂；縮口的圓形設計，也讓使用者可以輕鬆地將鞋拔插入鞋內，免角度問題來避回彎折而斷裂；相較於傳統材質，黃銅的厚度更為輕薄，可以提升穿鞋的舒適感。握把採用鐵刀木，深色的色澤和細緻的羽毛紋路，為抓握時帶來更溫潤的手感。

由實心原木無拼接製成的胡桃木底座，採用圓形插槽設計，沒有方向性，隨意插取更方便使用；全長41.5公分，在文昌尺中有「進寶、財旺」之意，讓出門穿鞋不再需要踏腳、彎腰，是出門必備的儀式感；放置於玄關一隅，成為生活品味的裝飾品，完美融入居家空間。

### 商品規格

材質 / 黃銅、鐵刀木、北美胡桃木

Brass, ironwood, north American walnut

尺寸 / 8.3 x 8.3 x 41.5 cm

參考售價 / NTD 2,980 / 組(鞋拔\*1、底座\*1)



*San Ho Studio* is dedicated to creating wooden products that combine design and functionality, aiming to bring warmth and uniqueness into people's lives with each product. The Brass Shoe Horn elegantly embodies a lifestyle attitude, offering both aesthetic appeal and practicality. It is a perfect fusion of art and utility, seamlessly blending beauty with function.

The *Brass Shoe Horn* features a tapered circular design that allows users to easily insert the shoehorn into their shoes. The thin brass material enhances comfort while putting on shoes. The walnut wood base measures 41.5 centimeters in length, corresponding to the auspicious meanings of "prosperity" and "wealth" found in the Wenchang ruler. This design eliminates the need to bend down or step on the shoehorn, adding a sense of ritual to the everyday act of putting on shoes. Placed in a corner of the entryway, it is not only practical but also serves as a decorative piece that showcases personal taste, perfectly integrating into home spaces.





靜觀工坊\_燦若星辰系列~小酒杯 *Tranquil Observation Studio\_ Stars Series - Lacquered Small Wine Glass*

## 傳統漆器融入大自然巧妙結合 為生活延續質感品味

「燦若星辰系列~小酒杯」利用傳統漆藝技術製作，以天然木材作為胎體，表層覆蓋的天然漆，達到天然無害又防水的功用；結合螺鈿裝飾技術，使用天然貝殼材料，透過手工藝將貝殼嵌入，展現的自然光澤和細膩紋理。

The *Stars Series - Lacquered Small Wine Glass* is crafted using traditional lacquer techniques, featuring natural wood as the base material and coated with natural lacquer to achieve a non-toxic and waterproof finish. The cups incorporate mother-of-pearl inlay, using natural shell materials that are meticulously inlaid into the surface through fine craftsmanship, showcasing a natural luster and intricate texture.

靜觀工坊 *Tranquil Observation Studio*

電話 / 0911-810940、0910-088259

Email / liutsulin@gmail.com

地址 / 南投縣草屯鎮富寮里富中路 319 巷 81 號

No. 81, Ln. 319, Fuzhong Rd., Caotun Township, Nantou County, Taiwan (R.O.C.)

南投縣草屯鎮富寮里中正路 574 號

No. 574, Zhongzheng Rd., Caotun Township, Nantou County, Taiwan (R.O.C.)



運用傳統漆工藝，凝煉出生活之美，「靜觀工坊」以天然漆為原料，透過生活器物的製作，讓生活與工藝的距離不再遙遠。「燦若星辰系列~小酒杯」為忙碌的都市生活，帶來靈感與寧靜，找尋與自然和諧共處的靜謐時光。

「燦若星辰系列~小酒杯」利用傳統漆藝技術製作，以天然木材作為胎體，表層覆蓋的天然漆，取自漆樹的樹汁，達到天然無害又防水的功用；結合螺鈿裝飾技術，使用天然貝殼材料，透過手工藝將貝殼嵌入，展現的自然光澤和細膩紋理，猶如夜光燦爛般的星辰。

貝殼的鑲嵌與木頭材料的應用都取自大自然，端起杯子時，透過觸摸其光滑的漆面和螺鈿的圖樣，感受到自然力量與生命韻律的共鳴。每一個小細節都經過設計，無論是家庭聚會還是朋友相聚時刻，透過杯子在日常生活中帶來更多的美好體驗。

*Tranquil Observation Studio* utilizes traditional lacquer techniques to distill the beauty of everyday life. Using natural lacquer as a raw material, they create items that bring craftsmanship closer to daily living. The *Stars Series - Lacquered Small Wine Glass* is designed to inspire and bring tranquility to the hectic pace of urban life, allowing people to find moments of peaceful harmony with nature amidst their busy schedules.

The *Stars Series - Lacquered Small Wine Glass* is covered with natural lacquer, which is extracted from the sap of lacquer trees, and inlaid with mother-of-pearl, showcasing a dazzling luster and texture reminiscent of stars in the night sky. When you lift the cup, the smooth lacquer surface and the mother-of-pearl inlay resonate with the power of nature and the rhythm of life. Every detail has been meticulously designed, ensuring that these cups enhance your everyday experiences, whether during family gatherings or moments spent with friends.

### 商品規格

材質 / 木胎、天然漆、螺鈿

Wood, natural lacquer, mother-of-pearl inlay

尺寸 / 5 x 5 x 6 cm、容量約 80cc

參考售價 / A款、B款 (A version, B version) NTD 1,280 / 件

C款 (C version) NTD 1,800 / 件







陶佐陶\_青瓷鏤空刻花水方組 TAOZOTAO\_Celadon hollowed-out Engraving Water Vessel

## 佈一席質感茶席 體現生活美學的極致

「青瓷鏤空刻花水方組」設計靈感來自水墨畫的意境，由純手工拉坯而成，從陶土塑形、修坯及化妝土打底，透過竹籤刻畫圖樣與鏤空，最後高溫還原燒製而成，依據情境設計杯蓋有遮掩茶渣的用途。

The *Celadon hollowed-out Engraving Water Vessel* draws its design inspiration from the essence of ink painting. It is handcrafted through a series of processes, including shaping the clay, refining the form, and applying a base layer of cosmetic clay. Intricate patterns and hollow designs are carved using bamboo sticks, and the final product is fired at high temperatures to achieve its form. The specially designed lid serves the practical function of concealing tea leaves, depending on the usage context.

陶佐陶 TAOZOTAO

電話 / 0988-098317

Email / jingmine@gmail.com

地址 / 臺南市永康區復華里復國二路 269 巷 23 號 1 樓

1F., No. 23, Ln. 269, Fuguo 2nd Rd., Yongkang Dist., Tainan City, Taiwan (R.O.C.)



佈一席茶，茶席不只是風味的講究，也結合茶道具展現生活之美。美觀與功能性兼備的「青瓷鏤空刻花水方組」，來自「陶佐陶」之作，將陶瓷藝術融入日常生活中。

「青瓷鏤空刻花水方組」設計靈感源自於水墨畫的意境，由純手工拉坯而成，經過多道繁複的工序，從陶土塑形、半乾後進行修坯及化妝土打底，透過竹籤刻畫出圖樣與鏤空的部分，最後高溫還原燒製而成，溫潤沈穩的色澤，恰如其分融入茶席之中。

工藝師特別設計水方上蓋，有遮掩茶渣的用途，精緻的鏤空圖樣也增添了視覺美感，使用時可單用水方或搭配上蓋，依不同擺設情境自由選擇，充分展現了現代茶道中對於實用性與美學的追求。從忙碌的生活中，也悉心留意細微而美好的事物；在每一次茶席中，無形中梳理了心緒，也體現了生活美學的追求。

Setting up an elegant tea table is not only about the appreciation of flavor but also about incorporating tea utensils to showcase the beauty of life. The Celadon hollowed-out Engraving Water Vessel, crafted by TAOZOTAO, combines aesthetics and functionality, blending ceramic art seamlessly into everyday life.

The *Celadon hollowed-out Engraving Water Vessel* is handcrafted through a complex series of processes, ultimately fired at high temperatures to achieve a warm and subdued color that perfectly complements the tea ceremony atmosphere. The artisan has specially designed the lid of the water container, which not only serves to conceal tea leaves but also features intricate hollow patterns that enhance its visual appeal. Users can choose to use the water container alone or with the lid, allowing for flexible arrangements based on different settings, fully embodying the modern tea ceremony's pursuit of practicality and aesthetics.



### 商品規格

材質 / 陶土、化妝土、青瓷釉

Clay, engobe, celadon glaze

尺寸 / 水方: 12 x 12 x 7.8 cm、上蓋: 11.6 x 11.6 x 2 cm

參考售價 / NTD 9,800 / 組(水方\*1、水方上蓋\*1)





紳木室\_Old Pal系列鋼筆-台灣龍柏 *Gentlewood\_Old Pal Series - Fountain Pen*

## 探索木質與工藝之間 以陪伴為核心概念的鋼筆

「Old Pal系列鋼筆-台灣龍柏」以「陪伴」為核心概念，握筆時，筆也會反向給你一個適當推力，猶如一位老朋友的支持。筆身採用全原木製作，經手工推蠟處理；選用德國老牌SCHMIDT鋼筆尖，讓書寫變得更流暢。

The *Old Pal Series - Fountain Pen* centers around the concept of "companionship." When writing, the pen seems to provide a gentle pushback, as if an old friend is silently supporting you. The pen body is made entirely from solid wood and has been hand-waxed to maintain its fragrance. Paired with a German SCHMIDT nib, it ensures a smooth and natural writing experience.

紳木室 *Gentlewood*

電話 / 0918-989793

Email / [gentlewood0802@gmail.com](mailto:gentlewood0802@gmail.com)、[gentlewood.tw@gamil.com](mailto:gentlewood.tw@gamil.com)

地址 / 臺中市西區民生路 368 巷 4 弄 4 號 2 樓

2F., No. 4, Aly. 4, Ln. 368, Minsheng Rd., West Dist., Taichung City, Taiwan (R.O.C.)



以「木」為本的設計品牌「紳木室Gentlewood」，將木質融入文具之中，透過木頭療癒人心，在迷人的香氣與紋理中找到寧靜的歸屬。「Old Pal系列鋼筆-台灣龍柏」質感溫潤細緻，在提筆書寫中細細享受木質的溫暖療癒。

在日常生活中，優雅的鋼筆具有書寫功用，也象徵著一種品味的獨特，「Old Pal系列鋼筆-台灣龍柏」採用全原木材製作，並經手工推蠟處理，維持木質香氣的持久散發；書寫時的抓握觸感，也帶來溫潤的感受。選用德國老牌SCHMIDT鋼筆尖，彈性適中的筆觸，讓書寫變得流暢無比，無論是流暢的長文還是精緻的簽名，都能輕鬆應對。

Old Pal設計概念是以「陪伴」為核心概念，當你握著鋼筆時，筆也會反向給你一個適當推力，在書寫過程中感受到彼此的支持。猶如一位老朋友般，總是在需要時默默陪伴與守候，適合打包這份禮物的祝福寓意，送給朋友、同事或是自己，讓每一次禮贈都充滿深刻的心意。

### 商品規格

材質 / 台灣龍柏

Taiwan dragon Chinese Juniper

尺寸 / 1.2 x 1.2 x 15 cm

參考售價 / NTD 2,780 / 組

(禮盒內含：鋼筆\*1、歐規旋轉吸墨器\*1、歐規卡式墨水\*1、聞香小木塊\*1)



*Gentlewood* is a design brand rooted in "wood," integrating wood into stationery to heal people's hearts. Through the charming aroma and texture of the wood, it offers a tranquil sense of belonging. The *Old Pal Series - Fountain Pen* features a warm and delicate texture, allowing users to feel the delicate comforting, and healing qualities of the wood while writing.

The entire pen body is made from solid wood and treated with hand-applied wax, which preserves the wood's fragrance over time. Equipped with a German SCHMIDT nib, it offers moderate flexibility for smooth writing, making it suitable for both lengthy compositions and intricate signatures with ease.





手文設計\_花青台灣 Soul & Wing\_ Indigo Flower

## 蠟染技藝結合藍靛植物染 轉化為蘊含東方古韻的設計

「花青台灣系列」展現傳統工藝與創意思維的火花，以藍靛染工藝揮灑於平面布料之上，呈現出點線面交融的東方古韻，表現如青花瓷圖紋質感與渲染效果。並以天然棉麻布料與環保內襯，減輕對環境的傷害。

The *Indigo Flower* showcases the spark of fusion between traditional craftsmanship and creative thinking. Using indigo dyeing techniques on flat fabric, it presents a blend of dots, lines, and surfaces that reflect the ancient elegance of Eastern art, creating textures and shading effects reminiscent of blue-and-white porcelain. Made from natural cotton and linen with eco-friendly linings, this series aims to minimize environmental impact.

手文設計 Soul & Wing

Email / Marcwang0709@gmail.com



艷色鮮明的臺灣傳統蠟染，是以蠟作為防染的染織工藝技法，利用染料不溶於蠟的特性，透過多層次的蠟染與浸染工序，呈現圖樣的多變性；「手文設計」將蠟染工藝結合天然的藍靛植物染，製作出「花青台灣系列」。

「花青台灣系列」展現傳統工藝與創意思維的火花，以藍靛染工藝揮灑於平面布料之上，呈現出點線面交融的東方古韻，表現如青花瓷圖紋質感與渲染效果。並以天然棉麻布料與環保內襯，例如：植物皮革、再生不織布進行加工製作，於染製過程中，也充分減少水洗的使用量，減輕對環境的傷害。

從生活中探索與創新，工藝師將藍靛染布料，運用於常見的手拿包、長夾或是名片匣，尋找日常和工藝之間的共鳴。作品融合花葉圖紋的意象，如同一幅藝術畫作，具備強烈的視覺印象；可搭配服裝和場合攜帶的手拿包，或是工作場合使用的名片匣，都能展現優雅的時尚魅力。

Taiwan's traditional batik, known for its vivid colors, is a dyeing technique that uses wax as a resist material. By leveraging the property that dye does not dissolve in wax, this craft involves multiple layers of waxing and dyeing to create intricate and varied patterns. *Soul & Wing* combines this batik technique with natural indigo plant dye to create the *Indigo Flower*, blending tradition with natural elements.

Using indigo dyeing techniques, the *Indigo Flower* showcases a harmonious blend of dots, lines, and surfaces, reflecting the ancient elegance of Eastern art and presenting patterns and shading effects reminiscent of blue-and-white porcelain. Made from natural cotton and linen, along with eco-friendly linings, the dyeing process minimizes washing to reduce environmental impact. The artisan explores and innovates from everyday life, applying indigo-dyed fabric to common items such as clutches, long wallets, and business card holders, seeking a resonance between daily life and craftsmanship.

### 商品規格

材質 / 棉麻布、臺灣藍靛、內襯 (植物皮革、再生不織布)  
Cotton and linen, Taiwan indigo, Lining (vegetable leather, recycled non-woven fabric), environmentally friendly materials

尺寸 / 手挽包: 22 x 19 x 9 cm、手拿包: 25 x 17 x 5 cm  
長夾: 20 x 10 x 1.5 cm、名片夾: 6.5 x 9.5 x 0.7 cm

參考售價 / 手挽包 (Handbag) NTD 4,680 / 件  
手拿包 (Clutch) NTD 4,280 / 件  
長夾 (Long clip) NTD 3,680 / 件  
名片夾 (Business card holder) NTD 1,680 / 件(3款)







莠紋家具設計\_臺灣檜木花 精油擴香禮盒組 Wood Grain Design\_Taiwan Cypress Flower - Essential Oil Diffuser Gift Set

## 廢棄木材與花藝交融 打造生活檜木香滿溢

「臺灣檜木花 精油擴香禮盒組」選用日治時期舊宿舍的臺灣檜木作為材料，賦予廢木材新價值。吸睛的花瓣造型，與隱約撲鼻的檜木香味，適合放置於辦公桌或家中角落，增添一份清新與雅致，輕鬆開啟生活美學的儀式感。

The *Taiwan Cypress Flower - Essential Oil Diffuser Gift Set* is made from Taiwan cypress wood sourced from old dormitories dating back to the Japanese colonial period, giving new value to reclaimed wood. The eye-catching petal design, combined with the subtle aroma of cypress, makes it perfect for placing on a desk or in a corner of the home, adding a touch of freshness and elegance while effortlessly enhancing the ritual of living aesthetics.

莠紋家具設計 Wood Grain Design

電話 / 0928-710103

Email / gl48830696@gmail.com

地址 / 雲林縣斗六市大學路 123 號

No. 123, University Road, Douliu City, Yunlin County, Taiwan (R.O.C.)



百年成樹，千年成材，檜木是國寶級的珍貴樹材，每棵樹都經過了千年的歷史光陰，擁有油脂多、木紋美，自然抗霉率也極高的特點，地球上僅存的幾種檜木，集中分布在美國、日本和台灣，臺灣獨特的地理環境造就了檜木的品質，質地堅硬，每一塊木頭都有自己的紋理、香味和靈魂。

早期檜木多運用於建築材料，隨著時間流逝，已經拆遷的老屋留下珍貴的檜木廢料，「莠紋家具設計」選用日治時期舊宿舍的臺灣檜木作為材料，賦予廢木材新價值，融合木工藝、花藝及金工技術，製作出「臺灣檜木花 精油擴香禮盒組」，傳遞循環再生理念，並與藝術美感相結合。

吸睛的花瓣造型，與隱約撲鼻的檜木香味，適合放置於辦公桌，偶爾提神醒腦，偶爾放空凝視；放置於家中角落，增添一份清新與雅致，輕鬆開啟生活美學的儀式感。

Hinoki cypress is regarded as a national treasure among precious woods, with a history spanning thousands of years. Each tree has endured the passage of time, rich in oils, with beautiful wood grain and a natural resistance to mold. Today, the few remaining species of hinoki are primarily found in the United States, Japan, and Taiwan. Taiwan's unique geographic environment contributes to the exceptional quality of its hinoki. The wood is dense and sturdy, with each piece possessing its own distinctive grain, fragrance, and character.

In the past, cypress wood was commonly used as a building material. Over time, the demolition of old houses has left behind precious cypress wood scraps. *Wood Grain Design* selects Taiwan cypress wood from old dormitories dating back to the Japanese colonial period, giving new value to reclaimed wood. By integrating woodworking, floral design, and metalworking techniques, they have created the *Taiwan Cypress Flower - Essential Oil Diffuser Gift Set*, conveying the concept of recycling and regeneration while combining artistic aesthetics.

### 商品規格

材質 / 臺灣檜木、臺灣檜木精油、牛皮紙、複合媒材  
Taiwanese cypress, Taiwanese cypress essential oil, kraft paper, mixed media

尺寸 / 擴香台：16 x 8 x 2.2 cm、精油：5 ml

整體禮盒：23.5 X 26 X 6 cm

參考售價 / NTD 1,650 / 組

(扁柏精油\*1、紅檜精油\*1、擴香台\*1)







破竹工作室\_窗花馬克杯墊-竹編文創商品 Po-Chu Bamboo Studio\_ Bamboo Woven Coaster

## 竹編色彩計畫 編織工藝的美學融合生活器物

「窗花馬克杯墊-竹編文創商品」以臺灣桂竹手工編織，繪上繽紛的三色主題，分別為酸甜草莓、清涼海洋、野菜蔬果，工藝師使用精巧的編織工藝將杯墊編織為鏤空圖樣，外框則使用較為堅硬的臺灣杉，將竹轉譯為更貼近生活的樣態。

The *Bamboo Woven Coaster* is handcrafted from Taiwanese bamboo and features a vibrant three-color theme, including strawberry red, ocean blue, and vegetable green. The artisan employs intricate weaving techniques to create hollow patterns in the coasters, while the outer frame is made from sturdy Taiwan cedar, transforming bamboo into a more practical form for everyday use.

破竹工作室 Po-Chu Bamboo Studio

Email / po.chu.studio@gmail.com



生長快速、可以柔韌彎折是竹子獨有的特性，有綠色鋼鐵之稱，而生產於臺灣的竹子，更因為良好的彈性，被廣泛的當作建築材料；「破竹工作室」探索竹子的多元可能性，運用傳統編織技術與自然元素做結合，從生活器物、首飾創作到裝置藝術等，創造竹與當代生活的新連結。

「窗花馬克杯墊-竹編文創商品」以臺灣桂竹手工編織，繪上繽紛的三色主題，分別為酸甜草莓、清涼海洋、野菜蔬果，竹子原色和鮮豔的色彩形成強烈對比，增加視覺的可看性；工藝師使用精巧的編織工藝將杯墊編織為鏤空圖樣，防止因杯子的水氣造成積水問題；外框則使用較為堅硬的臺灣杉，將竹轉譯為更貼近生活的樣態，於生活中敲打碰撞，也不容易毀壞。

作品將繽紛的顏色結合自然媒材，大玩色彩美學。讓竹子隨著生活器物走入日常當中，無論是居家布置，或是餐桌用具都能妝點，放上一杯清香花果茶，感受杯墊帶來的暖心時刻。

With its rapid growth and flexible yet resilient nature, bamboo is often referred to as "green steel." In Taiwan, bamboo's excellent elasticity has made it a widely used building material. *Po-Chu Bamboo Studio* explores the diverse potential of bamboo by combining traditional weaving techniques with natural elements to create everyday items, jewelry, and installation art, establishing a fresh connection between bamboo and contemporary life.

The *Bamboo Woven Coaster* is handcrafted from Taiwanese bamboo. The artisan employs intricate techniques to weave the coasters into hollow patterns, effectively preventing moisture buildup from cups. This piece combines vibrant colors with natural materials, showcasing a rich aesthetic that allows bamboo weaving to seamlessly integrate into daily life. Whether used for home decor or tableware, it adds a touch of elegance to any setting.

### 商品規格

材質 / 臺灣桂竹、臺灣杉

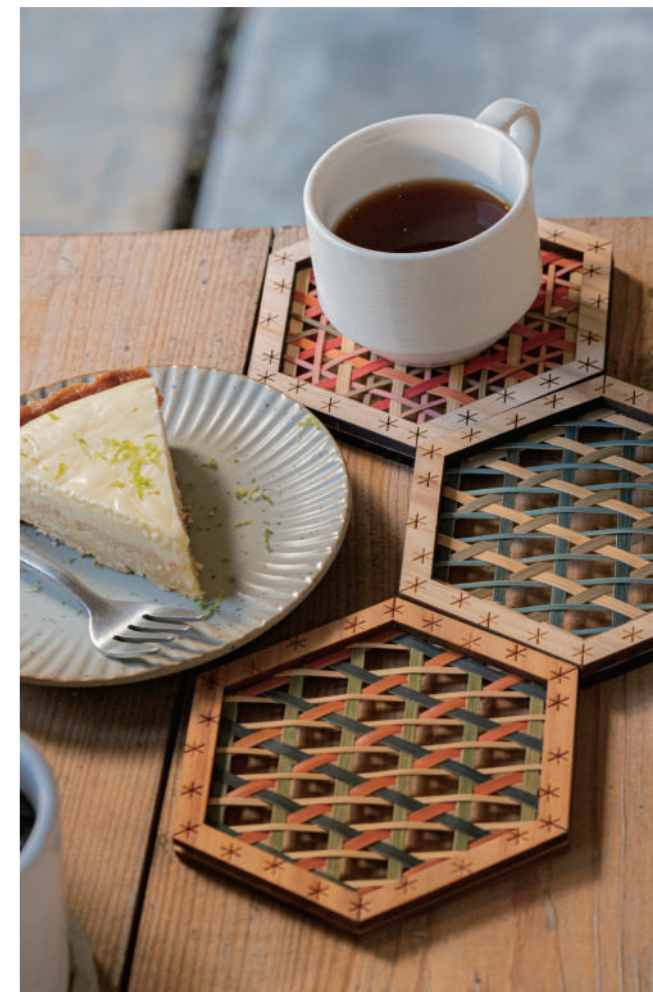
Taiwanese guizhu (bamboo) and Taiwania

尺寸 / 10.5 x 12 x 1 cm

款式 / 酸甜草莓、清涼海洋、野菜蔬果

Sweet strawberry red, refreshing ocean blue, wild vegetable green

參考售價 / NTD 600 / 件







蜻蜓雅築\_祖傳珍寶 *Dragonfly Beads Art Studio\_Inherited Treasure Bracelet*

## 一顆顆圓潤琉璃珠 串起當代美學與傳統文化

「祖傳珍寶」以手鍊的樣貌呈現，琉璃手鍊在排灣社會中為家中長輩叮囑女性後輩的象徵，帶有傳承珍藏的意象。工藝師以橙、黃、綠、藍配色創造獨特的花樣，並結合時尚金屬配件，以新的形式融入配戴者的生活。

The *Inherited Treasure Bracelet* is presented as a bracelet, symbolizing the guidance and heritage passed down from elder family members to younger women in the Paiwan culture. The artisan uses a combination of orange, yellow, green, and blue colors to create unique patterns, incorporating stylish metal accessories to seamlessly integrate this traditional piece into the wearer's modern life.

蜻蜓雅築 *Dragonfly Beads Art Studio*

Email / r087992856@gmail.com

地址 / 屏東縣三地門鄉三地村中正路二段 11 號

No. 11, Sec. 2, Zhongzheng Rd., Sandimen Township, Pingtung County, Taiwan (R.O.C.)



繽紛耀眼的琉璃珠來自於原住民—排灣族的工藝，不同花紋、顏色、串珠方式和配戴的部位都象徵著階級，每一顆琉璃都有其名字，也蘊含著獨特的故事。位於屏東三地門的「蜻蜓雅築」，將古老的文化與現代設計結合，發揚琉璃珠的藝術文化。

「祖傳珍寶」以手鍊的樣貌呈現，琉璃手鍊在排灣族中為家中長輩叮囑女性後輩的象徵，帶有傳承珍藏的意象。製作過程也仰賴經驗累積，一道道繁複的工序，從前置的預熱階段，在火光閃爍下，拉拔出色彩奪目的細絲；一次又一次捲覆實心的胚體，加上獨特的紋理和修飾，細細雕琢出一顆顆飽滿的祝福，賦予琉璃珠情感的寄託和悉心的關懷。

一般排灣族人鮮少於日常配戴的琉璃珠，但工藝師以橙、黃、綠、藍配色創造獨特的花樣，並結合時尚金屬配件，以新的形式融入配戴者的生活，保留了傳統元素，也賦予琉璃珠更深層的文化意涵。

The vibrant and eye-catching colored glaze beads come from the craftsmanship of the Paiwan indigenous people, with different patterns, colors, beading techniques, and wearing styles symbolizing various social statuses. Every bead has its own name and particular story. The *Dragonfly Beads Art Studio* is located in Sandimen, Pingtung, it integrates ancient culture with modern design to promote the art and culture of colored glaze beads.

The *Inherited Treasure Bracelet* is presented in the form of a bracelet, with the production process relying on the artisan's accumulated experience. Starting from the initial preheating phase, dazzling strands of color are drawn out in the flickering fire-light. The artisan then carefully wraps solid cores again and again, intricately carving each bead to create a full expression of blessings.

### 商品規格

材質 / 琉璃、金屬

Colored glaze, metal

尺寸 / 7.5 X 6 cm (手環內圈 17 cm)

參考售價 / NTD 1,980 / 件







織療室\_風帽 ziliaoshi\_Bucket Hat with Strap

## 手作編織的藝術 融合在地景致與自然季節

「風帽」運用鉤針編織技法作為基礎，靈活的技藝手法，創造帽子的立體度和輕盈感；材質選用天然木漿纖維與棉質結合，讓穿戴更為舒適；織帶具有韌性，除了實用的防風功能，也能當作綁髮的配件，讓穿戴者在日常生活中體現不同的美感。

The *Bucket Hat with Strap* is crafted using crochet techniques, utilizing flexible crafting methods to give the hat both dimension and lightness. It is made from a combination of natural wood pulp fiber and cotton, enhancing comfort while wearing. The durable straps not only provide practical wind resistance but can also be used as hair accessories, allowing wearers to showcase different aesthetics in their daily lives.

織療室 ziliaoshi

Email / ziliaoshi.atelier@gmail.com



以「為療癒而織」作為品牌概念，「織療室」希望透過手工編織品溫柔地撫慰每個使用者的心靈；每到夏天，臺南工作室樓下盛開的鳳凰木，鮮豔的花朵總是引人注目，將鳳凰花與療癒編織融合成「風帽」，捕捉了每一個夏日瞬間。

作品運用鉤針編織技法作為基礎，靈活的技藝手法，創造帽子的立體度和輕盈感；材質選用天然木漿纖維與棉質結合，讓穿戴更為舒適；織帶具有韌性，除了實用的防風功能，也能當作綁髮的配件，讓穿戴者在日常生活中體現不同的美感。

將對於自然景觀的感性詮釋，投射於帽子設計中，以編織紀錄在工作室樓下鳳凰木盛開的景象；「風帽」展示工藝師對生活美感無止境的探索，從充滿獨特魅力和療癒力量的手工編織製品，讓生活的每一天更顯得美好。

With the brand concept of "Woven for Healing," *Ziliaoshi* aims to gently soothe its users' hearts through handmade woven products. Every summer, the flamboyant royal poinciana flowers bloom outside the Tainan studio, creating a striking display. The artisan combines the imagery of these flowers with therapeutic weaving to create the *Bucket Hat with Strap* capturing the essence of each summer moment.

The piece is crafted using crochet techniques, using flexible crafting methods to give the hat both dimension and lightness. It is made from a combination of natural wood pulp fiber and cotton, it enhances comfort when worn. The durable straps not only serve a practical purpose by providing wind resistance but can also double as hair accessories, allowing wearers to express different aesthetics in their daily lives.

The artisan incorporates a sensuous interpretation of natural landscapes into the hat's design, weaving together the imagery of blooming royal poinciana. The *Bucket Hat with Strap* reflects the artisan's continual exploration of aesthetic living, offering a handmade woven piece filled with unique charm and healing power to make each day more beautiful.

### 商品規格

材質 / 台灣製紙線、棉線

Taiwan-made paper string and cotton string

尺寸 / 58 X 10 X 6 cm

顏色 / 淺木紋、復古藍

Light wood grain, vintage blue

參考售價 / NTD 4,280 / 件







島嶼。漆\_宇宙狂想-茶荷 FormoLacquer\_ Rhapsody in One

## 傳統工藝結合現代美學 呈現出繁複又簡單的生活器物

「宇宙狂想-茶荷」將乾燥後的葫蘆作為胎體，運用生漆的物理特性，黏附各種卵殼和螺鈿，加入不同層次的漆粉和金銀箔作為裝飾，讓作品散發獨特又深沉的魅力。

*Rhapsody in One* is crafted from dried gourd, utilizing the adhesive qualities of raw lacquer to incorporate eggshells and mother-of-pearl. Multiple layers of lacquer powder and gold and silver foil are then applied, creating a piece with unique and profound charm.

島嶼。漆 FormoLacquer

電話 / 0932-149956

Email / imamberchen@gmail.com

地址 / 南投縣草屯鎮玉成路 79 巷 7 號

No. 7, Ln. 79, Yucheng Rd., Caotun Township, Nantou County, Taiwan (R.O.C.)



眷戀於土地，著迷於漆藝，「島嶼。漆」將美學涵養回歸工藝本質。以創作者生命的歷練，透過工藝本質來實踐，「宇宙狂想-茶荷」便是集結傳統工藝技術與現代美學之作。

「宇宙狂想-茶荷」將乾燥後的葫蘆作為胎體，透過工藝師細膩的手作加工，塑形成花瓣及茶荷的樣態，再以生漆繪上猶如太陽黑子爆發時的意象，紀錄宇宙的深邃與閃亮；發亮的茶荷內部保留了葫蘆的自然肌理，表面則運用生漆的物理特性，黏附各種卵殼和螺鈿，加入不同層次的漆粉和金銀箔作為裝飾，讓作品散發獨特又深沉的魅力。

令人驚嘆的「宇宙狂想-茶荷」，有藍色和褐色可供選擇，外觀以層層疊疊的生漆上色，每一層漆都經過漫長等待，具備抗酸鹼、潑油防水的耐用性質，無論作為餐桌上的裝飾還是日常茶席使用，都能增添生活氣韻。

With a deep affection for this land and a fascination with lacquer art, *FormoLacquer* aims to bring aesthetic cultivation back to the essence of craftsmanship. Drawing on the creator's life experiences, the work *Rhapsody in One* emerges as a piece that blends traditional craft techniques with modern aesthetics.

*Rhapsody in One* is crafted from dried gourd, meticulously shaped by the artisan into the forms of petals and tea lotuses. Using raw lacquer, it depicts imagery reminiscent of solar flares, capturing the depth and brilliance of the universe. The interior of the tea lotus retains the natural texture of the gourd, while the surface incorporates the properties of raw lacquer to adhere various eggshells and mother-of-pearl, enhanced with multiple layers of lacquer powder and gold and silver foil decorations, giving the piece a unique and profound charm.

Available in blue and brown, the stunning *Rhapsody in One* features layers of raw lacquer that require lengthy drying times for each coat. The finished product boasts durable properties, including resistance to acids, bases, oil spills, and water. Whether used as a decorative piece on a dining table or as a functional item for tea ceremonies, it adds an elegant touch to daily life.

### 商品規格

材質 / 葫蘆、生漆、乾漆粉、金銀箔、螺鈿、卵殼

Gourd, raw lacquer, lacquer powder, gold and silver foil, mother-of-pearl and eggshell

尺寸 / 11 X 6 X 4 cm

參考售價 / NTD 6,800 / 件







米卡自在\_台灣老玻璃復古玻璃杯墊組 mica at home\_ Taiwanese Vintage Glass Coaster

## 窗花玻璃融合舊物和創意 傳遞著情感與故事

「臺灣老玻璃復古玻璃杯墊組」以回收玻璃為主要媒材，經過清洗、切割、研磨等精細工序，重新賦予舊物新生命；每一組杯墊包含海棠、十字花紋和日本膠花色，並將杯墊設計成具有對稱美感的樣式。

The *Taiwanese Vintage Glass Coaster* is made primarily from recycled glass, which undergoes meticulous processes of cleaning, cutting, and polishing to breathe new life into old materials. Each set features coasters with begonia, cross-hatch, and Japanese floral patterns, highlighting a symmetrical beauty.

米卡自在 mica at home

電話 / 0919-323297

Email / pattyhcf@mail2000.com.tw

地址 / 臺北市內湖區內湖路二段 263 巷 15 弄 3 號 3 樓

3F, No. 3, Aly. 15, Ln. 263, Sec. 2, Neihu Rd., Neihu Dist., Taipei City, Taiwan (R.O.C.)



將舊物的美好與實用器具融入生活，「mica at home 米卡自在」的工藝師從小在父母經營的皮革代工廠長大，對於皮革獨特的氣味與觸感留下深刻印象，也引發對於老舊手作物件的喜愛，嘗試將皮革、水泥、金工和臺灣老玻璃等新舊材質混搭，創獨具個人特色的生活物件。

「臺灣老玻璃復古玻璃杯墊組」以回收玻璃為主要媒材，經過清洗、切割、研磨……等精細工序，重新賦予舊物新生命。透過手作的溫度與創意做結合，讓杯墊成為傳遞情感與故事的載體。每一組杯墊包含三個不同花色：海棠、十字花紋和日本膠花，並參考傳統園林建築中常見的「漏窗」形式，將杯墊設計成具有對稱美感的樣式，適合功夫茶使用或單純作為收藏觀賞之用。

老玻璃早期為臺灣家家戶戶經常使用的建築材料，承載著許多人的童年回憶；但隨著時間推移，老玻璃資源日漸減少，工藝師發揮巧思留下美好記憶。

*Mica at Home* is dedicated to blending the beauty of vintage objects with practical tools for everyday life. The artisans grew up in their parents' leather workshop, where they developed a deep appreciation for the unique scent and texture of leather, sparking a strong interest in handmade vintage items. They experiment with a mix of materials, including leather, cement, metalwork, and old Taiwanese glass, to create uniquely styled home objects.

The *Taiwanese Vintage Glass Coaster* is crafted primarily from recycled glass, which undergoes meticulous cleaning, cutting, and polishing to breathe new life into old materials. The combination of handcrafted warmth and creativity transforms each coaster into a vessel for emotions and stories. Each set includes three coasters featuring different patterns: begonia, cross-hatch, and Japanese floral designs. These patterns are inspired by the "decorative windows" found in traditional garden architecture, showcasing a symmetrical beauty suitable for both kung fu tea ceremonies and as collectible display items.

In the past, vintage glass was a common building material in Taiwanese households, carrying cherished childhood memories for many. However, over time, the availability of old glass has dwindled, making it increasingly precious.

商品規格

材質 / 玻璃

Glass

尺寸 / 7 X 7 cm

參考售價 / NTD 1,000 / 組







器職所在\_奇異鳥花瓶 Qi Zhi Place\_ Kiwi Bird Vase

## 逗趣樣貌融入花瓶設計 轉譯陶瓷的創意無限

「奇異鳥花瓶」將獨有的長喙和肥厚的腳掌注入花瓶設計中，創造可以站著或坐著的姿勢；圓滾滾的身材，則成為可用來插花的瓶身，並有多種顏色可供選擇，為居家空間增添一抹可愛氣息。

The *Kiwi Bird Vase* incorporates the kiwi's unique long beak and stout feet into its design, creating a shape that can stand or sit. Its round body serves as a functional vase for flowers and is available in various color options, adding a touch of charm to any living space.

器職所在 Qi Zhi Place

電話 / 0958-098522

Email / chuan810202@gmail.com

地址 / 花蓮縣新城鄉北埔村民權街 230 號

No. 230, Minquan St., Xincheng Township, Hualien County, Taiwan (R.O.C.)



「奇異鳥」是紐西蘭的國鳥，身型如同梨子，羽毛蓬鬆細密，作為曾與恐龍同時期生存的古老動物，屬於珍貴的稀有動物。擅長將手感溫度融合於作品當中的「器職所在」，透過陶瓷的無限創意，將奇異鳥轉譯為「奇異鳥花瓶」。

奇異鳥以可愛逗趣的外型廣受喜愛，工藝師將獨有的長喙和肥厚的腳掌注入花瓶設計中，創造可以站著或坐著的姿勢；圓滾滾的身材，則成為可用來插花的瓶身，從實用性出發，融入創意打造實用又饒富趣味的生活擺設。

「奇異鳥花瓶」有多種顏色可供選擇，包含紫色、咖啡、正綠和粉紅，每一種色調都散發著獨特的魅力，讓人愛不釋手。結合創意思維，將傳統陶瓷變身為可愛逗趣的模樣，適合擺設於家中，也適合插上美麗的花朵，都能為居家空間增添一抹療癒的氛圍。

The kiwi, New Zealand's national bird, resembles a pear in shape and features dense, fluffy feathers. As an ancient creature that coexisted with dinosaurs, the kiwi is a rare and precious species. *Qi Zhi Place* excels at infusing handmade warmth into its creations, translating the kiwi into the *Kiwi Bird Vase* through the limitless creativity of ceramics.

The artisan incorporates the kiwi's distinctive long beak and stout feet into the vase design, resulting in a whimsical shape that can stand or sit. The round body serves as a functional vase for flowers, combining practicality with playfulness and adding unique charm to any living space.

The *Kiwi Bird Vase* is available in various colors, including purple, brown, vibrant green, and pink. Each hue exudes its own special charm, making it irresistible. This vase transforms traditional ceramics into a cute and fun form, enhancing home decor or beautifully displaying flowers and creating a soothing atmosphere in any space.

商品規格

材質 / 陶瓷

Ceramics

尺寸 / 9.5 X 6.5 X 7 cm

顏色 / 咖啡、綠色、紫色、粉紅

參考售價 / NTD 680 / 件





# 年度入選品牌索引

*Index*

**TGC**  
Taiwan Green Craft



品牌索引 | Index

01 太平藍 <i>Taiping Blue</i>	P.18	07 蘑菇 MOGU	P.30	13 植物語彙 <i>Silver Plants</i>	P.44	19 石見坊 <i>SHIH JIAN STUDIO</i>	P.58
02 老木創生木制所 <i>LAO MU</i>	P.20	08 吟遊文創 <i>CCCDPS</i>	P.32	14 拿鞘 <i>Nature</i>	P.48	20 玲瓏窯 <i>Lin Long Yao</i>	P.60
03 上作美器 <i>SZMQ STUDIO</i>	P.22	09 Hon Studio	P.34	15 竹貓 <i>Takeneko</i>	P.50	21 溪泉 <i>Si Cyuan</i>	P.62
04 米口·陶 <i>Mico Pottery</i>	P.24	10 iLife手感設計 <i>iLife Design</i>	P.38	16 皐月 <i>SATUKI</i>	P.52	22 C.C.C. Glass Works	P.64
05 WÈI CRAFT	P.26	11 A.M IDEAS	P.40	17 泥研植物社 <i>PULP</i>	P.54	23 喜樹之器 <i>SHISU Craft</i>	P.66
06 AURA 稜光	P.28	12 陳彫刻處 <i>CHEN'S WOOD</i>	P.42	18 舒式 <i>RELEISURELY</i>	P.56	24 大地 <i>TATI</i>	P.68



品牌索引 | Index

25	微一設計 <i>OUI design</i>	P.70	31	RIVER WE	P.84	37	靜觀工坊 <i>Tranquil Observation Studio</i>	P.96	43	蜻蜓雅築 <i>Dragonfly Beads Art Studio</i>	P.108
26	自然色 <i>NATURAL COLOR WORKS</i>	P.74	32	赤軍寶飾 <i>CHYHIJUN</i>	P.86	38	陶佐陶 <i>TAOZOTAO</i>	P.98	44	織療室 <i>ziliaoshi</i>	P.110
27	OakCherry	P.76	33	派克木餘 <i>PECKMUYU</i>	P.88	39	紳木室 <i>Gentlewood</i>	P.100	45	島嶼·漆 <i>Formo Lacquer</i>	P.112
28	天染工坊 <i>Tennii</i>	P.78	34	季節角落自然染 <i>Seasons Corner</i>	P.90	40	手文設計 <i>Soul &amp; Wing</i>	P.102	46	米卡自在 <i>mica at home</i>	P.114
29	品花學 <i>Hinka</i>	P.80	35	umami	P.92	41	莨紋家具設計 <i>Wood Grain Design</i>	P.104	47	器職所在 <i>Qi Zhi Place</i>	P.116
30	原織本色 <i>Original Fiber Primary Color</i>	P.82	36	三禾制所 <i>San Ho Studio</i>	P.94	42	破竹工作室 <i>Po-Chu Bamboo Studio</i>	P.106			



# 2024 臺灣綠工藝 Taiwan Green Craft 年度型錄

指導單位：文化部

主辦單位：國立臺灣工藝研究發展中心

發行人：陳殿禮

策劃：江瑞燐

主編：陳羿帆

執行編輯：周詩穎、張薰予

執行單位：首傑藝術事業有限公司

編輯小組：廖述昌、林鈺珊、吳韋諄、鍾昕妤、陳欣妤、莊千慧

美術設計：楊凱媚

出版單位：國立臺灣工藝研究發展中心

出版日期：中華民國113年12月

地址：542 南投縣草屯鎮中正路573號

電話：049-233-4141

版權所有，未經授權不得轉載







